

Maxzone Industry & Engineering Supplies - Your Pump Solution Provider



The pump products of the following various series, specifications and model are available to provide

- i. Single Stage Pump Series
- ii. Multistage Pump Series
- iii. Double Suction Pump Series
- iv. Petrochemical Pump Series
- v. Sewage Pump Series
- vi. Fire Fighting Pump Series
- vii. High Temperature High Pressure Boiler Water Supply Pump Series
- viii. Axial Flow Mixing Self Priming Pump
- ix. No Seal Self Control Self Priming Pump
- x. Desulphurization Pump

辰豐工程工业供应

MAXZONE INDUSTRY & ENGINEERING SUPPLIES

Address : No.2, Jalan Meranti 2, Taman Rinting, 81750 Masai, Johor, Malaysia.

Tel : +607-2532753

Fax : +607-2513068

Mobile: 0127019322

Website: www.maxzoneindustry.com

Email : maxzoneindustry@gmail.com

1.SLS Series Single-Stage Single-Suction Vertical Centrifugal Pump



SLS series single-stage single-suction vertical centrifugal pump

Outlined

Model SLS single-stage single-suction vertical centrifugal pump is a high-effective energy-saving product successfully designed by means of adopting the property data of IS model centrifugal pump and the unique merits of vertical pump and strictly in accordance with ISO2858 world standard and the latest national standard and an ideal product to replace IS horizontal pump, DL model pump etc. ordinary pumps. The flow range is 1.5~2400m³/h and the stroke range 8-150m and there are basic type, by-passtype, A、B、C cutting type etc. more than 250 specifications. And per the different flow medium and temperature, SLR hot-water pump, SLH chemical pump and SLY(YG) oil pump and SLHY vertical non-explosive chemical pump. etc. Series products. of the same type and same property data have been designed and made.

Characterstics

1. Compact structure, small volume, beautiful outlook. The lower barycenter of the vertical structure which coincides with the center of the pump feet strengthens the stability of running and the duration.
2. Easy to mount. Because of the same apertures of both inlet and outlet which also locate on the same central line, the pump can be directly mounted on any part of the pipeline just as a valve. The motor is covered with a rain proof cap so that operation can be done outdoors. Mounting feet are equipped with the pump so that it can be stably mounted.
3. Stable running, low noise, high concentricity of components. Bearings of low noise are used for the motor, the impellers are of best dynamic and static balance, no vibration at running and the environment thus being improved.
4. No leakage. The shaft is mechaically sealed with carbide alloy wearable material, settling the serious leakage of the filling seal of a centrifugal pump, extending the duration and ensuring the operation place clean and tidy.
5. Easy to maintain. Not necessary to remove the pipeline for check-out and maintenance, only to take out the nuts on the pump lid, the motor and the driving components.
6. The pump, according to the operation condition of the worksite, may be vertically, horizontally etc. multiways mounted and also according to the requirements for the flow and stroke, mounted in parallel and/or in series to increase the needed flow and stroke.

Application

All applications in water, energy and industrial engineering. All applications in water, energy and industrial engineering.

2. SLG Series Stainless Steel Vertical Multi-Stage Pump



SLG series stainless steel vertical multi-stage pump

Outlined

SLG/SLGF are non-self-suction vertical multi-stage centrifugal pumps mounted with a standard motor, the motor shaft is linked, via the motor seat, directly with the pump shaft with a clutch, both pressure-proof barrel and flow-passing components are fixed in between the motor seat and the water in-out section with pull-bar bolts and both water inlet and outlet of the pump are positioned on one line of the pump bottom; and the pumps can be fitted with an intelligent protector, in case of necessity, to effectively protect them against dry movement, lack-of-phase, overload etc

Application

SLG/SLGF are the products of multiple functions, applicable for transporting various different media from tap water to industrial liquids and suitable for different ranges of temperature, flow and pressure. SLG is applicable for non-corrosive liquids while SLGF for lightly corrosive ones. Water supply: filter and transportation and quartering water feed for water works, boost for main pipes and high buildings. Industrial boost: flowing water system, cleaning system, high pressure rinsing system, fire fighting system. Industrial liquid transportation: cooling & air-conditioning system, boiler water supply & condensing system, completion of machine tools, acid and alkali. Water treatment: extra-filter system, reverse osmosis system, distilling system, separator, swimming pool. Irrigation: farmland irrigation, sprinkler irrigation, trickle irrigation.

Working conditons

Thin, clean, non-combustible non-explosive liquids containing no solid grains or fibers.
 Liquid temperature: constant-temperature type -15~+70°C hot-water type +70~120°C
 Ambient temperature: max. +40°C
 Elevation: max. 1000m
 Note: please note it at the model selection in case the elevation is over 1000m

3. SLW Series Horizontal Single-Stage Centrifugal Pump



SLW series horizontal single-stage centrifugal pump

Outlined

SLW series single-stage end-suction horizontal centrifugal pumps are made by way of improving the design of SLS series vertical centrifugal pumps of this company with the performance parameters identical to those of SLS series and in line with the requirements of ISO2858. The products are produced strictly according to the relevant requirements, so they have a stable quality and reliable performance and are the brand-new ones instead of model IS horizontal pump, model DL pump etc. ordinary pumps. They are divided into basic type, flow-expansion type、A、 B、 C cutting type etc. in more than 250 specifications and with a flow range of 1.5-2400m³/h and a head range of 8-150m. And, per the different fluid media and temperatures, model SLWR hot-water pump, mode SLWH chemical pump, model SLWY oil pump and model SLWHY horizontal anti-explosion chemical pump etc. series products are designed and manufactured and have the same performance parameters.

Characterstics

1.Compact structure. These series pumps have an integrally Horizontal structure, beautiful appearance and less area of occupied land, which, comparing with the ordinary ones, is reduced by 30%. 2.Stable running, low noise, high concentricity of assembly. By the straight joint between the motor and the pump, the middle structure is made simplified, thus enhancing the running stability, making the impeller of a good balance of moving-resting, resulting in no vibration during running and improving the environment of use. 3.No leakage. A mechanical seal of antisepticcarbide alloy is used for the shaft sealing so as to get rid of the serious leakage of the fillings of centrifugal pumps and ensure the operating place clean and neat. 4.Convenient service. Service can be easily done without removing any pipeline because of the back-door structure. 5.Viewing from the inlet of the pump, the outlet of it can be mounted in one of the three ways, horizontally leftward, vertically upward and horizontally rightward.

Application

1.SLW series horizontal centrifugal pump is used to transport pure water and other liquids of the similar physical nature as pure water... 2.SLWR series horizontal hot-water pump is suitable for the warming,hot-water boost, circulation, transportation etc... 3.SLWH series horizontal chemical pump is used to transport the liquid containing no solid grain, of cornosivity and a similar viscosity like water ... 4.SLWY series horizontal anti-explosion oil pump is suitable for the industries of petroleum, light & textile in dustry, chemistry, mechanism tec... 5.SLWHY series horizontal anti-explosion chemical pump is used to transport the liquid containing no solid grain, of corrosivity.

4.SLZ(W) Series Low Noise Single-Stage Pump



SLZ(W) series low noise single-stage pump

Outlined

The low-noise centrifugal pumps are new products made through a long-term development and according to the requirement to the noise in the environmental protection of the new century and, as their main feature, the motor uses water-cooling instead of the air-cooling, which reduces the energy loss of the pump and the noise, really an environmental protection energy-saving product of new generation. The range of performance of the low-noise pump is the same as that of model SLS and SLW available in this Co. and they are all developed per ISO2858. It includes four kinds: Model SLZ vertical low-noise pump; Model SLZW horizontal low-noise pump; Model SLZD vertical low-speed low-noise pump; Model SLZWD horizontal low-speed low-noise pump; For SLZ and SLZW, the rotating speed is 2950rpm and, of the range of performance, the flow <math>< 300\text{m}^3/\text{h}</math> and the head <math>< 150\text{m}</math>. For SLZD and SLZWD, the rotating speed is 1480rpm and 980rpm, the flow <math>< 1500\text{m}^3/\text{h}</math>, the head <math>< 80\text{m}</math>. These pumps are used to transport pure water and the liquids of the physical and chemical natures similar to pure water with the medium temperature under 95°C, cowgirl measure and other, if adoption heat the bearings, electrical engineering use paint lines, and the H class insulate the grade, can attain 150°C and suitable for industrial and city water supply, boost water supply for high buildings, air-conditioning, warming, fighting, circulated boost and so on. The aperture of the pump is available from 40mm to 500mm, extensively meeting with various demands. To further save energy and close to the actual running condition, the outer diameter of the impeller of the pumps of each specification may be cut per the actual running condition (with A, B, C shown next to the model). As of the voltage, those motors less than 1.1kw are 220-380V and those more than 1.1kw are all 380V.

5.DL Series Vertical Multi-Stage Centrifugal Pump



DL series vertical multi-stage centrifugal pump

Outlined

1. DL series pump is vertical, single and multi-layer absorption, stage centrifugal pump for conveying water and chemical and physical properties similar to the 85 °C water of fluid or use. DLR type heat pump transport medium temperature of 150 °C below 2. The pump is vertical installation, a compact structure, low noise, cover an area of an area small, characteristics, main used for urban water supply and the central heating system.

Characterstics

Pump model significance: 65 DL R 30-16 x 5 Number five, for impeller The head of a single impeller produce for 16 m The flow rate of the pump to 30 m³ / h ReShuiXing Vertical multistage pumps Pump water caliber

Application

1. DL type pump for vertical structure, and its suction is located in the section of the pump water (bottom), located in section water nozzles (the upper portion of the pump), are in horizontal layout. 2. Type the main parts, the pump is: water section, interruption, for water, filling body, impeller, diffuser, water period of diffuser, shaft, bearing, bushings, balance drum, balance set, the connection frame etc.

Working conditons

This series of horizontal multistage centrifugal pump for both ends supporting. centre, shell part is the day, the pump transmission mode of powder is through the flexible coupling and motor connection 1. Part of the stator Mainly by breathing in part, middle, spit out section, diffuser, stuffing box body, they respectively with strained bolt coupling as a body, vomit exports and the suction were vertical. 2. The rotor parts Mainly by the axis, impeller, balance dish ji collar, etc parts.

6.GDL Series Multi-Stage Pipeline Centrifugal Pump



GDL series multi-stage pipeline centrifugal pump

Outlined

GDL type multilevel pipe centrifugal pump is she at home and abroad for the excellent pump type based on the combined with the use of user requirements and fire fighting about, according to standards JB/TQ6435-92 standard design and manufacture of a new generation of products.

Characterstics

The type to pump the vertical section zone and stainless steel shell structure, the pump is located in the same level of import and export and the same diameters, like in the pipeline as valve installed, it also focused on the vertical multistage pumps, high pressure, the pump cover an area of an area small ji Ben pipe of the advantages of convenient installation, and with excellent hydraulic model, all also has high energy saving, smooth operation, and the advantages of shaft seals use wear-resisting of mechanical seal, leakproof, long service life

Application

This type of pump is mainly applicable to high voltage operation system of cold and heat water circulation and supercharged, high-rise buildings more pump water supply, fire control, parallel the boiler feed water and cooling water system and various rinses the transportation etc.

Working conditons

1. This type pump may transport water or chemical and physical properties of similar YuQingShui liquid. 2. The temperature of the liquid-15 °C~ + : 120 °C; 3. Work pressure: the maximum pressure < 2.5 MPa work, that is, the system pressure = inlet pressure + close valve stress at work < 2.5 MPa; 4. The temperature of the surrounding environment should be lower than 40 °C, relative humidity, more than 95%; 5. Transport corrosive medium and hot liquid

7. DLZ Series Low-Noise Vertical Multi-Stage Centrifugal Pump



DLZ series low-noise vertical multi-stage centrifugal pump

Outlined

1. Model DLZ low-noise vertical multi-stage centrifugal pump is a new-style product of environmental protection and features one combined unit formed by pump and motor, the motor is a low-noise water-cooled one and use of water cooling instead of a blower can lower noise and energy consumption. The water for cooling the motor can be either the one the pump transports or the one externally supplied. Model DLZ pump is used for transporting pure water and various liquids with both physical and chemical natures similar to the pure water, the transported medium's temperature is below 80°C, for the said temperature above 80°C, use external supplied cooling water to cool the motor. Suitable for industrial and city water supply, high building boosted water supply, air- conditioning, warming, fire-fighting, circular boost and so on.
2. The pump is vertically mounted, featuring compact structure, low noise, less area of land etc.
3. The technical standards executed for the series pump: JB/TQ809-89<>,GB5657-1995<>.
4. Rotary direction of pump: CCW viewing downward from the motor.

8. S Series Single-Stage Double-Suction Horizontal Split Centrifugal Pump



S series single-stage double-suction horizontal split centrifugal pump

Outlined

Model S pump is a single-stage double-suction horizontal split centrifugal pump and used to transport pure water and the liquid of both physical and chemical nature similar to those of water, the maximum temperature of which must not be over 80°C, suitable for water supply and drainage in factories, mines, cities and electric stations, waterlogged land drainage and irrigation of farming land and various hydraulic projects. This series pump comply with the standards of GB/T3216 and GB/T5657.

Application

About the structure

Both inlet and outlet of this pump are placed under the axial line, horizontally and vertical to the axial line, the pump casing is opened in the middle so it is unnecessary to remove the water inlet and outlet pipelines and motor(or other prime movers). The pump moves CW viewing from the clutch to it. The pump moving CCW can also be made, but it should be specially noted at order. The main parts of the pump are: pump casing(1), pump cover (2), impeller(3), shaft(4), dual-suction seal ring(5), muff(6), bearing(15) etc.and all of them, except the axle which is made of quality carbon steel, are made of cast iron. The material may be replaced with others upon different media. Both pump casing and cover form the working chamber of the impeller and there are threaded holes for mounting vacuum and pressure meters on the flanges at both inlet and outlet and for water draining on the lower side of them. The impeller is static-balance calibrated, fixed with the m- uff and the muff nuts in both sides and its axial position can be adjusted via the nuts and axial force gets balanced by means of the symmetrical arrangement of its blades, there may be residual axial force which is borne by the bearing at the axle end. The pump shaft is supported by two single-column centripe- tal ball bearings, which are mounted inside of the bearing body on both ends of the pump and lubricated with grease. The dual- suction seal ring is used to reduce the leak at the impeller. The pump is driven directly by means of connecting to it via an elastic clutch. (Set up a stand additionally in case of a rubber band driving)...

9. SLO(W) Series Single-Stage Double-Suction Inter-Opened Spiral Casing Centring Centrifugal Pump



SLO(W) series single-stage double-suction inter-opened spiral casing centring centrifugal pump

Outlined

Model SLO and SLOW pumps are single-stage double-suction split volute casing centrifugal pumps and used for liquid transportation for water works, air-conditioning circulation, building, irrigation, drainage pump station, electric power station, industrial water supply system, fire-fighting system, shipbuilding and so on.

Characteristics

1. Compact structure nice appearance, good stability and easy installation.
2. Stable running the optimally designed double-suction impeller makes the axial force reduced to the minimum and has a blade-style of very excellent hydraulic performance, both internal surface of the pump casing and the impeller's surface, being precisely cast, are extremely smooth and have a notable performance vapour-corrosion resisting and a high efficiency.
3. The pump case is double volute structured, which greatly reduces radial force, lightens bearing's load and prolongs bearing's service life.
4. Bearing use SKF and NSK bearings to guarantee a stable running, low noise and long duration.
5. Shaft seal use BURGMANN mechanical or stuffing seal to ensure a 8000h non-leak running.

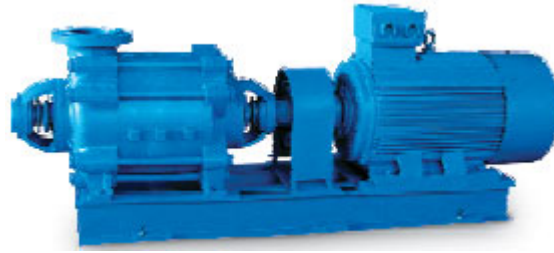
Application

Mainly used in water supply plant, water circulation in air conditioning, building water supply, irrigation, drainage pump stations, power stations, industrial water supply system, fire control system, ships conveying liquids such as industrial occasion.

Working conditions

SLOW series pump operation data Pump export DN 80 800 mm in diameter
 Flow more than quantity Q 11600 m³ / h
 Yang cheng more than 200 m H
 More than 105 °C temperature T work
 More than 80 mg/solid particles L
 Work more than 25 allowable stress bar
 Allowable test pressure more than 37.5 bar

10. MD Type Wearable Centrifugal Mine Water Pump



MD type wearable centrifugal mine water pump

Outlined

MD type wearable centrifugal mine waterpump is used to transport the clear water and the neutral liquid of pit water with solid grain $\leq 1.5\%$. Granularity $< 0.5\text{mm}$. The temperature of the liquid is not over 80°C . The pumps are suitable for water supply and drainage in mines, factories and cities. Note: When the situation is in the coal mine, explosion proof type motor shall be used.

Characterstics

Calculation of the erection height

The erection height of the pump, that is the vertical distance from the sucked liquid surface to the pump shaft should be less than it which should be taken into consideration for users to select the pump, is calculated per the following formula: $H_{sz} \leq H_a - H_v - \Delta H_s - (NPSH)_r$ Of which: H_{sz} -- the erection height set with the pump(m) H_a --- the head of the atmospheric pressure under the conditions on the spot of use(m) H_v --- the head of the vapourized pressure under the temperature of the liquid being umped(m) ΔH_s -- the lost head of the suck-in pipeline(m) $(NPSH)_r$ -- the necessary value of NPSH given in the table of performance parameters(m)

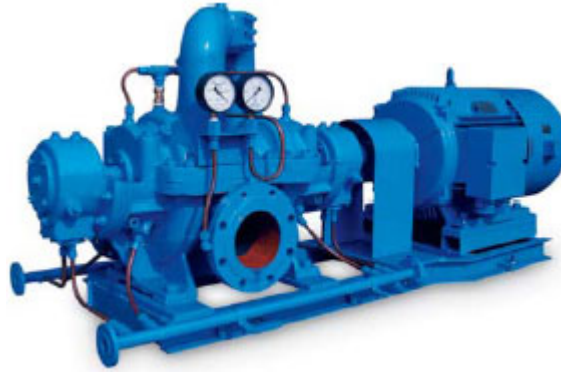
Application

Model MD pump consists of four parts, stator, rotor, bearing and shaft seal: 1.Stator consists of inlet, middle and outlet sections and the guide vane etc., with the take-up bolt tightly clamping all sections to form a working room. The inlet of it stands horizontally while the outlet vertically upward. 2.Rotor consists of the shaft, impeller, balancing disk and muff etc., the shaft passes the power to the impeller to have it work; the balancing disk balances the axial force; and replaceable muff is mounted on both sides of the shaft to protect it. 3.There are rolling and sliding bearings: The rolling bearing consists of bearing seat, bearing and bearing gland and uses grease for lubrication. The sliding bearing consists of bearing body and cover, liner, dust-proof disk, oil leveller, oil throwing ring etc., and uses thinned oil for lubrication. 4. The shaft is sealed with stuffing and the shaft seal consists of the sealing contents, stuffing, baffle. The liquid in the sealing work-room functions water-sealing, water-cooling and water lubricating and the water for water-sealing comes from the pressure water inside of the pump. In addition, the pump is directly actuated by the prime mover through the elastic clutch and, viewing from the prime mover, moves CW.

Working conditons

Flow is the 25-500 m³ / h
Head is 60-1798 m

11.NW Series Low Pressure Heater Drainage Pump



NW Series Low Pressure Heater Drainage Pump

Outlined

Your NW model with thin pumps, used for low 125000 kw-300000 kw power plant coal conveying low-pressure heater drain, the temperature of the medium in addition to 150-nw-90 x 2 more than 130 °C, the rest of the model are more than 120 °C for models. The series pump cavitation performance is good, suitable for the low NPSH working conditions of work.

Characteristics

Your NW model with low water pump out mainly by the stator, rotor, rolling bearing and axis of FengSi most. In addition, the pump is composed by elastic prime mover direct drive from prime mover. Axial end see pumps, pump points have clockwise and counter-clockwise.

Application

NW series pump out the application scope of low pressure for the power plant, the pump cavitation performance

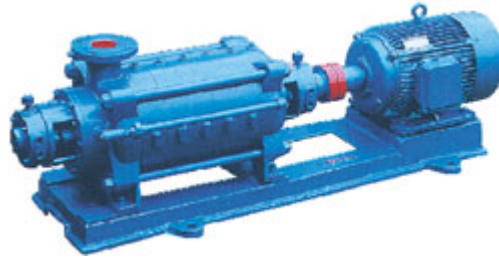
Working conditions

Flow is 36-182 m³ / h

Head is 130-230 m

Temperature of the liquid is 0 °C 130 °C

12.SLD Single-Suction Multi-Stage Centrifugal Pump



SLD Single-suction Multi-stage Centrifugal Pump

Outlined

SLD single-suction multi-stage sectional-type centrifugal pump is used to transport the pure water containing no solid grains and the liquid with both physical and chemical natures similar to those of pure water, the temperature of the liquid is not over 80°C, suitable for water supply and drainage in mines, factories and cities. Note: Use an explosion-proof motor when used in a coal well. This series pump comply with the standards of GB/T3216 and GB/T5657.

Characterstics

Calculation of the erection height

The erection height of the pump, that is the vertical distance from the sucked liquid surface to the pump shaft should be less than it which should be taken into consideration for users to select the pump, is calculated per the following formula: $H_{sz} \leq H_a - H_v - \Delta H_s - (NPSH)_r$ Of which:
 H_{sz} -- the erection height set with the pump(m) H_a --- the head of the atmospheric pressure under the conditions on the spot of use(m) H_v --- the head of the vapourized pressure under the tem- perature of the liquid being umped(m) ΔH_s -- the lost head of the suck-in pipeline(m) $(NPSH)_r$ -- the necessary value of NPSH given in the ta- ble of performance parameters(m)

Application

Description of structure

Model SLD pump consists of four parts, stator, rotor, bea- ring and shaft seal: 1.Stator consists of inlet, middle and outlet sections and the guide vane etc., with the take-up bolt tightly clamping all sections to form a working room. The inlet of it stands horizontally while the outlet vertically upward. 2.Rotor consists of the shaft, impeller, balancing disk and muff etc., the shaft passes the power to the impeller to have it work; the balancing disk balances the axial force; and replaceable muff is mounted on both sides of the shaft to protect it. 3.There are rolling and sliding bearings: The rolling bearing consists of bearing seat, bearing and bearing gland and uses grease for lubrication. The sliding bearing consists of bearing body and cover, liner, dust-proof disk, oil leveller, oil throwing ring etc., and uses thinned oil for lubrication. 4. The shaft is sealed with stuffing and the shaft seal consi- sts of the sealing contents, stuffing, baffle. The liquid in the sealing work-room functions water-sealing, water-cooling and water lubricating and the water for water- sealing comes from the pressure water inside of the pump. A mechanical seal can also be used upon the requirement from users. In addition, the pump is directly actuated by the prime m- over through the elastic clutch and, viewing from the prime mover, moves CW.

13 LDTN Series Condensate Water Pump

The image part with relationship ID r1626 was not



The image part with relationship ID r1626 was not

LDTN series condensate water pump

Outlined

1, structural type: LDTN type pump is vertical dual shell structure; Impeller for a closed and homonymous arrangement, and diversion components as the bowl form shell. Inhalation and spit out the interface which located in pump cylinder and spit out the seat, and both can do 180 °, 90 ° deflection of multiple angles. 2, structure composition: LDTN type pump consists of three major components, namely: the pump cylinder, the service department and the water part. 1) pump cylinder: pump cylinder is made by the high quality carbon steel or stainless steel plate roll made of circular cylinder welding parts, its side suction flange with. 2) work: work with multistage impeller homonymous arrangement consists of the pump rotor and in its formed the outer shell of the diversion space diversion composed. The rotor pump impeller and pump shaft by, conical sets, bearing a composition of lining. Impeller is will mover energy conversion to pumping the liquid energy core components. Pump shaft is as the carrier of impeller, double transfer all of the rotor load. 3) water part: part water by diameter changes tube, pipe, spit out a composition stands, and so on. The axis of the pump, transmission shaft from that part of the center to go through. 3, bearing: pump contains a multiple of water lubrication bearing, used to support pump rotor radial force. Pump rotor axial force of the thrust bearing by motor. 4, shaft seal: shaft seals use M7N / 43-G9 mechanical seal, the need for seal water injection. Seal water requirements of the product contour map. See random

Application

Apply to fire (nuclear power) carries in the thermal system in the condenser water, also suitable for NPSH or installed base surface restricted work process of conveying water chemical properties of medium similar.

Working conditons

Flow: 90 1700 m³ / h

Head: 48 to 326 m

The liquid temperature: 0 °C 80 °C (special request of up to 120 °C)

14.S Series Single-Stage Double-Suction Horizontal Split Centrifugal Pump



S series single-stage double-suction horizontal split centrifugal pump

Outlined

S type pump is single stage double suction pump. For conveying water and chemical and physical properties similar to the liquid water. Liquid the highest temperature should not be more than 80 °C, suitable for factories, mines, the city of the water supply and drainage, power plant, irrigation and drainage of farmland water conservancy project.

Characteristics

The type of the suction pump inlet and outlet are in the water pump, and axis vertical axis below the horizontal, pump shell in open, maintenance without water, remove drain road and electric machine room (or other prime mover). From the direction of the pump shaft coupling to look, pumps clockwise rotation. According to need to also can produce the pump counterclockwise, but should be put forward special order. This type of main parts of the pump are: pump body, cover, impeller pump shaft, double suction sealing ring, collar, bearing. According to the different media can change to other material.

Application

For conveying water and chemical and physical properties similar to the liquid water. Liquid the highest temperature should not be more than 80 °C, suitable for factories, mines, the city of the water supply and drainage, power plant, irrigation and drainage of farmland water conservancy project

Working conditons

Head range: 78 m;
Temperature range: no more than 80 °C;

15.IH Model Single-Stage Single-Suction Cantilever Type Chemical Centrifugal Pump



IH model single-stage single-suction cantilever type chemical centrifugal pump

Outlined

Model IH chemical pump is single grade single suck (axial inhaled) cantilever centrifugal pump for conveying, not containing solid particles, corrosive, viscosity similar to the liquid water. Its mark, rated performance and size adopt international standard ISO2858 equivalent, performance range, high efficiency, "three" level is high and easy maintenance, etc, and its efficiency than F type pump by an average of 5%, is the national promotion energy-saving products

Characterstics

Performance range, high efficiency, "three" level is high and easy maintenance, etc, and its efficiency than F type pump by an average of 5%, is the national promotion energy-saving products.

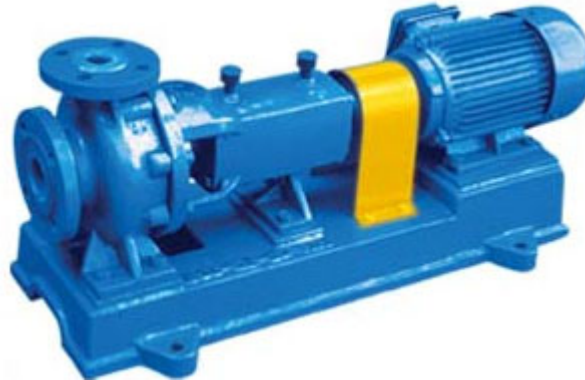
Application

Model IH chemical pump medium temperature 20 °C for-105 °C, when need the cooling measures may transport the higher temperature medium, used in chemical, petroleum, metallurgy, electric power, papermaking, foodstuff, pharmacy and synthetic fiber industry used to transport all kinds of corrosive or do not allow the similar to the water pollution medium.

Working conditons

Flow is the 6.3-400 m³ / h
 Head is 5-125 m
 The liquid temperature is 20 °C 105 °C
 Working pressure is the biggest 16 bar

16.IHF Series Fluoroplastics Chemical Pump



IHF Series Fluoroplastics Chemical Pump

Outlined

IHF type pump for single grade single suction style fluorine plastic alloy chemical centrifugal pump, this pump is in accordance with the international standard and combined with the processing technology of the non-metallic pump design production. Pump body using metal shell lining fep (F46), the cover of the pump impeller and bushings, all use metal embedded parts outsourcing fluorine plastic overall sintering pressure molding, the shaft seals use loading bellows mechanical seal, static ring choose 99.9% alumina ceramics or Si_3N_4 , moving ring adopted four fluorine fill material, import and export all use cast steel body reinforcement

Characteristics

The pump has corrosion resistance, wear-resisting, high temperature resistant, not aging, high mechanical strength, stable operation, advanced and reasonable structure, sealed performance can be, remove the tight overhaul in one hundred, long life and other advantages, is the world one of the latest corrosion resistant equipment.

Application

IHF type centrifugal pump widely used in chemical, pharmaceutical, oil, metallurgical, metallurgy, electric power, electroplating, dye, pesticides, pulp and paper, food and other industries, such as car manufacturing of hungry pickling, spray-paint technology; Non-ferrous metal smelting of electrolyte transport; Ionic membrane less alkali chlorine water in the project, wastewater treatment and add acid process what large feeling. But in $85\text{ }^{\circ}\text{C} \sim 200\text{ }^{\circ}\text{C}$ temperature conditions conveying any concentration of the teahouse heating sulphuric acid, hydrochloric acid, acetic acid, hydrofluoric acid, nitric acid, wang, alkali, strong oxidizer, organic solvents, reducing agent, strong corrosive medium.

Working conditons

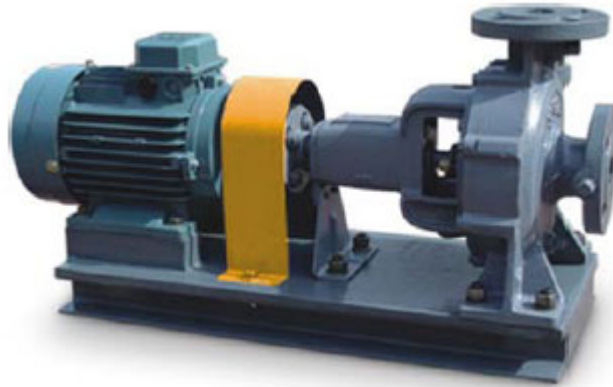
Flow is the 6.3-240 m^3 / h

Head is 5-132 m

The liquid temperature is $85\text{ }^{\circ}\text{C}$ to $200\text{ }^{\circ}\text{C}$

Working pressure is the biggest 16 bar

17.SLZA Series Petroche Mical Process Pump



SLZA series petroche mical process pump

Outlined

SLZA series oil chemical process pump is the introduction of advanced foreign technology manufacturing. According to API610 and VDMA24297 (light, medium sized) standard and the design, the production of products. May transport the various temperature and concentration of sulfuric acid, nitric acid, hydrochloric acid and phosphoric acid and other inorganic acid and organic acid solution; All sorts of temperature and concentration of sodium hydroxide alkaline solution and sodium carbonate, etc; All kinds of salt solution; All kinds of liquid petroleum chemical products, organic compounds and other corrosive liquid. This type pump used in oil refineries, oil chemical industry coal processing project, cryogenic engineering, paper making, the sugar industry, water supply plant, sea water desalination plant, electric power plant of environmental protection engineering and ChuanBoYe, etc.

Application

Oil refineries, oil chemical industry, coal processing and cryogenic engineering; Chemical industry, paper making, pulp industry, the sugar industry and ordinary process industries Water supply plant, sea water desalination plant; Heating and air conditioning system; Power plants; Environmental protection engineering; Ships and offshore industry, etc

Working conditons

Flow for 5-2400 m³ / h

Head is 14-300 m

The liquid temperature is 80 °C~ 450 °C

Work is the biggest 4.0 MPa pressure

18.SLCZ Series Standard Chemical Process Pump



SLCZ series standard chemical process pump

Outlined

SLCZ series standard chemical process pump is the introduction of advanced foreign technology manufacturing. Structure is horizontal, single stage, single inhalation; Its size and performance meet DIN24256 / ISO2858 series.

Characterstics

Performance cover the IH series standard chemical pump all performance, its efficiency, cavitation performance targets were exceeded IH pump, and model IH pump to single exchange. Characteristic curve smooth. Cavitation low value, high efficiency. In the dissatisfaction, also keep the load characteristics.

Application

Transporting low or high temperature liquid. Neutral or corrosive liquid. Clean or inside liquid containing solid grain, oil and chemical used in chemical industry, oil refineries, learn mill and pulp industry, the sugar industry.

Working conditons

Flow is the 5-2400 m³ / h
Head is 14-300 m
The liquid temperature is 80 °C~ 450 °C
Work is the biggest 4.0 MPa pressure

19.CYZ Series Self-Suction Centrifugal Pumps



CYZ series Self-suction centrifugal pumps

Outlined

This unit of production CYZ type self-priming centrifugal pump is according to the domestic and foreign relevant technical data after digestion and the absorption of developed by the latest pump products The pump using high quality materials and refined, seal USES carbide mechanical seal, durable, spit out the line do not need to install the relief valve, inhaled lines do not need to install bottom valve so simplified the pipeline system, and improves the working conditions

Characterstics

The pump has simple structure, convenient operation, stable operation, easy maintenance, high efficiency, long service life, the strong ability to absorb, etc. No need to install in pipeline bottom valve, before work in the pump body only to ensure certain priming oil. Used for oil tanker or water wear, can hold concurrently claimants of Saul, and Saul tank pump tank effect is good.

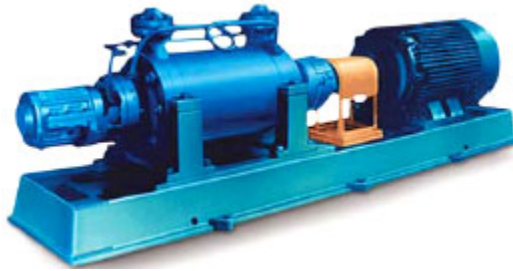
Application

CYZ type self-priming centrifugal pump is applicable to the oil industry, oil tanker, land the ideal products, and is suitable for Marine oil pumps, bilge pump, fire pump and ballast pump and machine in cooling water circulation pump etc, are conveying of gasoline, kerosene, diesel oil, oil products such as HangMei sea water, and water, medium temperature 20 °C 80 °C Like to switch to corrosion mechanical seal and stainless steel material.

Working conditons

Flow is the 3.2-500 m³ / h
Head is 12-80 m
The liquid temperature is 20 °C 80 °C
Greatest pressure 12 bar

20.AY Series Centrifugal Oil Pump



AY series centrifugal oil pump

Outlined

Ay centrifugal pump type series, be in the old y oil pump on the basis of series and transformed to design, which is to meet the needs of the construction of modernization, quickly adapt to the center for energy saving from equipment renewal and the development of new products. Ay centrifugal pump type, used in oil refining and petrochemical industry and chemical industry and other local transportation not containing solid makings oil and its products, the corrosion degree and using temperature according to contact with the media of the main components of the material is divided into three categories.

Characterstics

1, stator part: mainly by bearing parts, inhaled section, spit out the middle section, the guide vane, level, at the end of the guide vane pipe, the parts poles and bolt, to tighten it together, the stator all through the inhaled section, spit out the section, rim horizontal center is located in the direction of the pump support legs of the pump stents will set in the pump seat 2, the rotor part: mainly by shaft, impeller, balance dish, balance drum, seal and composed. A collar 3, bearing parts: bearing combining rotor of supporting part is 40 AY, AY 50 by rolling bearing 60 AY AY, AY, 80 100, 150, AY, and the use of sliding bearings and equipped with thrust ball bearings are splashing of oil, bearing with thin oil lubrication, the ring and water cooling. 4, sealing parts: impeller sealing, breathing in the period between level, middle, diffuser, impeller all use replaceable mouth ring for clearance seal.

Application

AY centrifugal pump type, used in oil refining and petrochemical industry and chemical industry and other local transportation not containing solid makings oil and its products.

Working conditons

Flow: 6.25 m³ / h 180 m³ / h

Head: 105 m to 657 m

The temperature of the medium: 0 °C 300 °C

21.ZW Since The Series Of Plug-Suction Pump Sewage



ZW since the series of plug-suction pump sewage

Outlined

ZW serial self-priming non-block sewage pump is repeated in the study of domestic and foreign similar technology developed on the basis of a new structure products. The pump set suction and non-clogged emission from the axial at an organic whole, the backflow, and through mixed type pump body, impeller port's unique design, can like self-priming clear water pump that generally do not need to install the valve and irrigation water diversion, and can pump contains large particles solid and long fiber impurity liquid.

Characterstics

The pump and compared with the prices of similar products, the structure is simple and good self-priming performance, sewage, ability, high efficiency and energy saving, convenient operation and maintenance and other characteristics, in sewage pump series products of various technical performance index with leading domestic and reach the international advanced level, and has a broad application market and development prospects.

Application

ZW type self-priming non-clog sewage pump can be widely used in municipal sewage system, oiliness breeding, light industry, paper making, textile, food, chemical, electric power industries, is pumping fiber, size and mixed suspension, and other chemical medium the ideal impurities pump.

Working conditons

The pump environment temperature, the temperature of the medium more than 50 oC more than 80 oC special requirements of up to 200 oC; Medium PH value cast iron material for 6-9, stainless steel for 2-13; Medium weight not more than 1240 KG/M3; Since the height can't absorb more than e. 4. 5-5. 5 meters, suction pipe length is more than 10 meters; Through the ability of pump diameter suspended particles diameter 60%, fiber length for pump diameter 5 times.

22.WQ Series Submersible Sewage Pump



WQ series submersible sewage pump

Outlined

Bearing: SKF chooses import bearings or NTN bearing. The reasonable bearing configuration, to prolong the service life of the pump. Cooling: Built-in cooling system, no matter in liquid surface or motor is in liquid surface, all can make pump working normally. Pumping the liquid from the body part of pump cycle to cooling tube and cabinet take the heat generated between motor. Need external cooling, cooling set can be separated, and with the pump body and individual cooling system connected. Motor: Motor for class F insulation, the highest working temperature of 155 °C, effective sealing make motor protection grade for IPX8. Mechanical seal: Choose burgmann Germany mechanical seal, two way mechanical seal series independent work. Make motor and pump seal to space, for motor provides double protection. Pump side for tungsten carbide/tungsten carbide materials, motor side for graphite/silicon carbide. Oil room: Oil lubrication and cooling mechanical seal can be, and can prevent liquid penetrant to motor of the additional security function. A certain amount of air inside can reduce indoor pressure in the accumulation of oil rise.

Application

WQ series submersible sewage is mainly used for municipal engineering, industrial building, hotel, hospital, civil air defence, mining and other industries, can be used to send row with solid particles and all kinds of long fiber sewage and waste water, rain and city life in the water.

Working conditons

Flow is 10 to 6000 m³ / h
Head is 6-62 m
For 0 °C temperature of the liquid-60 °C
The maximum pressure 16 bar

23.WQZ Series Self-Mixing Sewage Pump-Diving



WQZ series Self-mixing sewage pump-diving

Outlined

WQZ series since the blunt stir type diving sewage pump is the company in diving sewage pump WQ type based on improved product. Update This product design principle is in sewage pump import design a mixing unit, through the internal unique mechanism design, will be part of the inlet water, sewage, the spread of bottom line, its huge momentum can sewage the bottom of the sediment rushed from sediment and sewage blend in, then be inhaled with pump chamber, the time when the mixing range up to 3-6 m. This product not only has excellent performance type pump WQ, still can completely prevent dirt deposition in the bottom, sewage treatment, do not need to do regular cleaning pool sewage pool work, save manpower.

Characterstics

Monitoring system: Stator embedded has three series of thermal control switch. At normal temperature for "closed" condition, when the temperature reaches 125 °C stator, switch on. Oil leak probe, with indoor used as leakage detection. When the pump mechanical seal leak oil, the oil and water to a certain proportion of the interior, oil and water probe is concentration issued a warning signal (light) and automatically cut off power, pump stop working. The maintenance personnel should change in time, and the oil indoor oil check and replacement pump side mechanical seal. No less than 30 kw motor power of the pump.

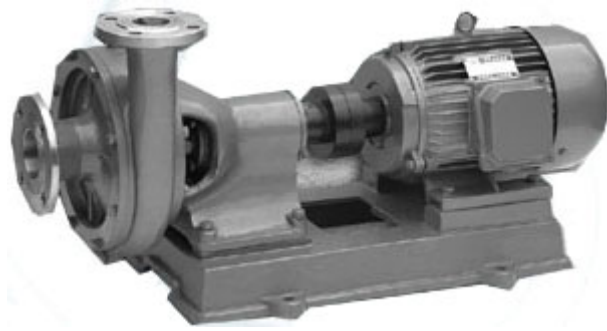
Application

WQZ series since the blunt stir type diving sewage pump is mainly used in municipal engineering, industrial building, hotel, hospital, civil air defence, mining and other industries, can be used to send row with solid particles and all kinds of long fiber sewage and waste water, rain and city life in the water.

Working conditons

1, medium temperature should not be more than 60 °C, medium density more than 1200 kg/m³, PH value in 5 to 9 range. 2, operation shall not be lower than the minimum level of pump installation dimensions, see the chart the "lowest level ▼" (including automatic cooling system) if there is no automatic cooling system, the runtime minimum level shall not be less than two-thirds of all the high pump. 3, the rated voltage is 380 V rated for 50 HZ ac frequency. In the rated voltage and frequency deviation rated is not more than + 5% when, motor to normal operation.

24.PWF Series Corrosion-Resistant Stainless Steel Pump Sewage



PWF series corrosion-resistant stainless steel pump sewage

Outlined

PWF type corrosion sewage pumps can transfer temperature below 80 °C with acid, alkali or other corrosive of sewage, widely used in chemical, petroleum, light industry, food, pharmaceutical and environment protection, etc. This unit is now 50 PWF ~ 65 production, 80 ~ 100, 100 PWF PWF ~ 125 three pump type, its performance range: flow Q of 10 to 125 m³ / h; Head H of 10 to 18 m. Flow components with the material of the ZG1Cr18Ni9 and HT200 two, can be based on user needs to supply.

Characterstics

PWF type pump is single stage, single suck, cantilever corrosion resistance of centrifugal sewage pumps. The suction pump for axial direction level, pumped export according to need to be into horizontal or vertical direction. PWF type pump structure as shown, it mainly by the pump cover (1), pump shell (2), (3), impeller shaft seal (4), (5) and axial bracket (6), and other parts is composed. Shaft seals use novel double seals form. Pump and motor installed in common chassis, through the flexible coupling directly driven by motor. From electric directions pumps, pump should be clockwise.

Application

PWF type corrosion sewage pumps can transfer temperature below 80 °C with acid, alkali or other corrosive of sewage, widely used in chemical, petroleum, light industry, food, pharmaceutical and environment protection, etc.

Working conditons

Flow: 10 125 m³ / h
Head: 10 to 18 m

25.YW(P) Series Under-Liquid Sewage Pump



YW(P) series under-liquid sewage pump

Outlined

The second generation series under YW liquid sewage pump is my latest development development group in harsh conditions for conveying wastewater new patent products. Is the first generation in existing product basis, absorbs the domestic and foreign advanced technology, using current optimal performance of the WQ series submersible sewage pump hydraulic model developed by. YW series under the liquid sewage pump WQ not only has the sewage pump type diving all excellent performance, but also because of its special installation forms, and greatly expand the submersible sewage pump WQ type of application condition and use circumstance

Characterstics

1. The corrosion resistance, be able to bear or endure corrupt, anti-clogging
- 2, is easy to use, safety, long service life
- 3, stable and reliable pump liquid deep

Application

Suitable for steel mills, power plant, MeiChang, mining, hospitals, municipal, chemical, pharmaceutical, building, hotel, restaurant, sea water to take a platoon, etc. Used for containing particles, fiber industrial water, urban sewage or rain, water. Can also be used to some chemical process.

Working conditons

Flow is 10 to 2000 m³ / h

Head is 7-62 m

The liquid temperature-20 °C-60 °C

The maximum pressure 16 bar

26.WL Series Vertical Sewage Pump



WL series vertical sewage pump

Outlined

WL series vertical non-clog sewage pump suction pump for single spiral, pump with no jam in the winding type single (double) big port impeller pump body and feed line, all club have hole, for hand from sundry. This series of sewage pump has two kinds of structure types, one kind is the motor shaft to lengthen the pump impeller direct connection, and the motor and pump for coaxial one institution; Another is the motor installed in the pump body even as one of the holder, the motor shaft and pump shaft coupling between the motor, with standard vertical motor.

Characterstics

Each institution type with two different water way, and two different structure of the base connection. A is for level, with import inhaled corner function, can according to the specific conditions of use, adjust the Angle, and export in order that the pipeline connection; 2 it is import for vertical axis to type inhaled, in order to vertical installation.

Application

The product is mainly suitable for conveying city life sewage, industrial and mining enterprises, sewage sludge, excrement and urine, ash and such as pulp thick, also applies to circulating water pump, water supply and drainage pumps; Exploration, mining supporting attached machine, rural ZhaoQiChi, irrigation and other purposes.

Working conditons

1. No more than 60 °C temperature of the medium, medium density for 1200 kg/m³.
2. Cast iron material medium PH value in 5 to 9 range.
3. Pump, machine for the whole structure, the working environment temperature should not be more than 40 °C, relative humidity is not more than 95%.
4. Usually, the pump must work within the stipulated in the head, guarantee the motor, such as the need to don't overload in low head under the state should be declared in order to manufacturers, reasonable selection.

27.Z(H)LB Series Vertical Axial-(Mixed)-Flow Pump



Z(H)LB series vertical axial-(mixed)-flow pump

Outlined

Z (H) LB vertical shaft (mixed) flow pump is this company in the introduction of foreign advanced technology, according to the requirements of the customers and the conditions of use elaborate design and the successful development of a new generation of products.

Characterstics

This series of product selection latest excellent hydraulic model, high efficiency, stable performance, wide range of cavitation erosion and excellent performance; The blade precision casting, wax touch surface is smooth and fluent, casting size accuracy and precision design consistent, hydraulic friction loss, impact greatly reduced, leaf loss balance performance, efficiency than ordinary impeller better high 3 to 5%. Z (H) LB vertical shaft (mixed) flow pump suction applicable to send water or chemical and physical properties similar to the other liquid water.

Application

Z (H) LB vertical shaft (mixed) flow pump application scope for industry, agriculture, city water supply project, mild discharge engineering, water transfer project

Working conditons

Flow is 84 48888 m³ / h
Head is 1 to 30.6 m
The liquid temperature 0 °C