



SHANGHAI GL ENVIRONMENTAL TECHNOLOGY CO., LTD.

ADD: #4, No.188 of Guanghua Road, Minhang District, Shanghai, China

TEL:86-21-64890289

FAX:86-21-51686350

EMAIL:sales@glenvironment.com

Web:www.glenvironment.com

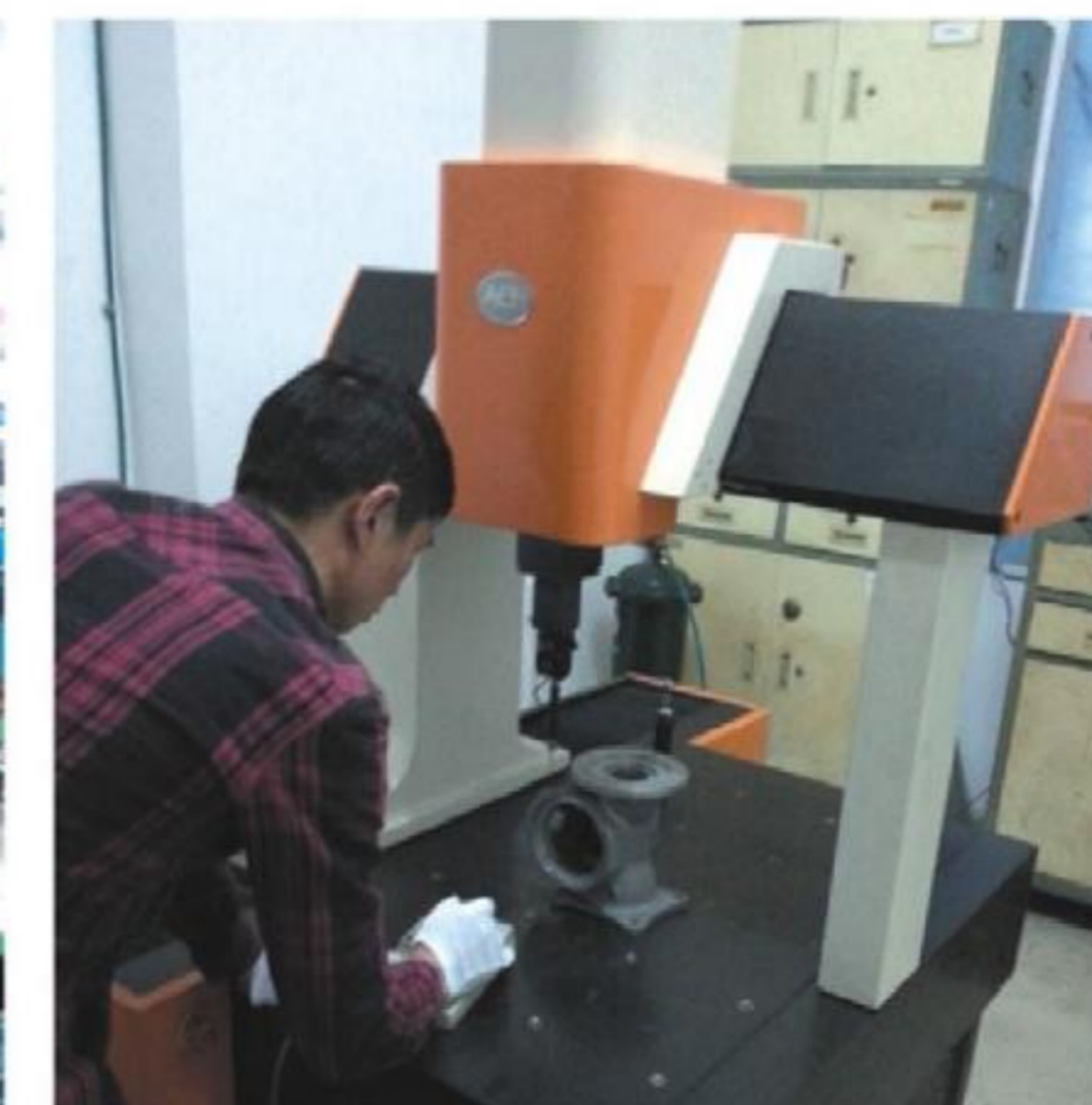
SHANGHAI GL ENVIRONMENTAL TECHNOLOGY CO., LTD.

COMPANY PROFILE

ShangHai GL Environmental Technology Co., Ltd. has more than ten years of application experience in the water treatment industry, has a professional research and development team and experienced engineers. Sales of products can be directed explicitly to other countries.

Through the accumulation of years of industry, we hope that through our efforts to bring China's good water treatment products to the world, China's water treatment environment, relatively more comprehensive, more severe. Therefore, we are confident to provide better service and product prices. Our professional ability in the water treatment industry will also provide better technical support to our partners.

Although we established in 2016, but before we, we engaged in the industry in Chinese work has been more than 10 years, our engineers in the industry know very clearly, have their own opinions in many applications, and product sales can clear instructions to other countries for sale.



Quality, Expertise, Innovation, Reliability.

We have first class manufacturing equipments , complete new concept and latest technology, to produce high-quality products,complying with international standard



Contents

H Electronic metering pump 	HS Electronic metering pump 	HH Electronic metering pump 
HJ-W Mechanical Diaphragm Dosing Pump 	HJ-L Mechanical Diaphragm Dosing Pump 	HD Mechanical Diaphragm Dosing Pump 
HJ-Z Mechanical Diaphragm Dosing Pump 	HJ-D Mechanical Diaphragm Dosing Pump 	HJ-X2 Mechanical Diaphragm Dosing Pump 

HJ-D2 Mechanical Diaphragm Dosing Pump 	HY-X Hydraulic Metering Pump 	HY-Z Hydraulic Metering Pump 
HY-ZR Hydraulic Metering Pump 	HY-D Hydraulic Metering Pump 	HY-D2 Hydraulic Metering Pump 
HY-T Hydraulic Metering Pump 	HY-T2 Hydraulic Metering Pump 	Diaphragm Rupture Detecting System 

Chemical resistance table

21-24

Dosing Systems

25-26

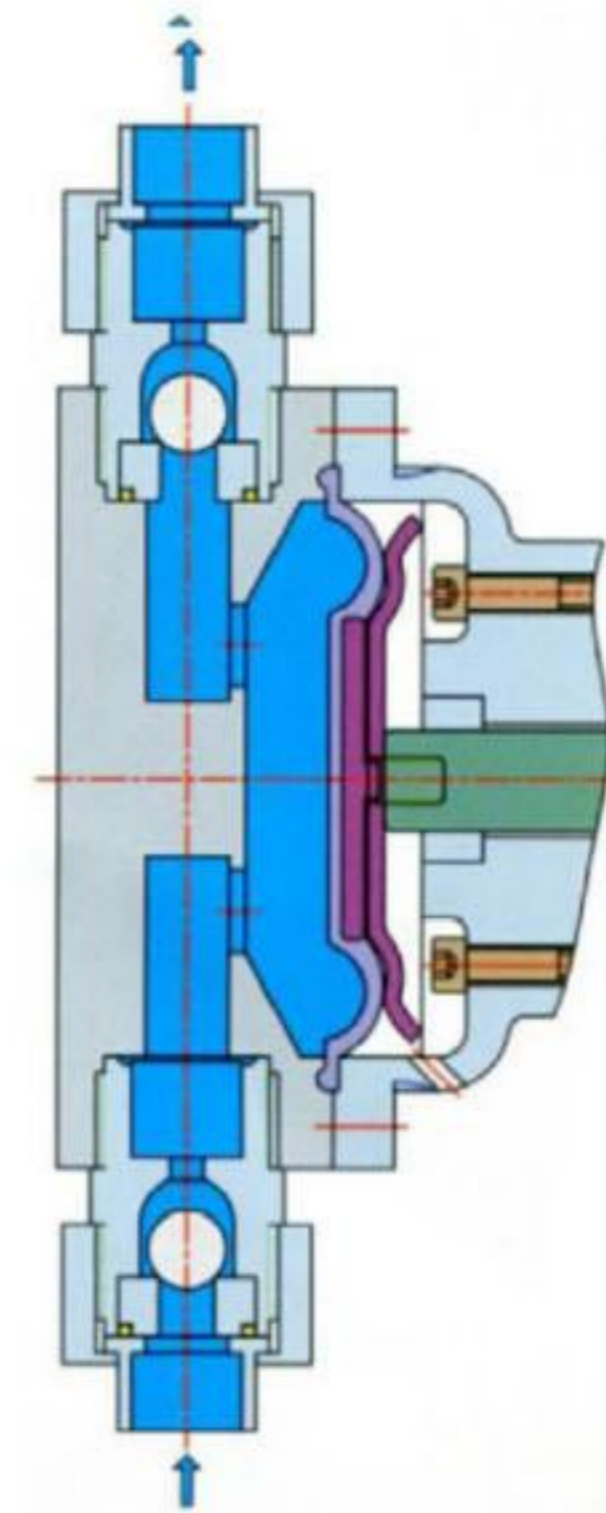
■ Principle & structure

This series of products is based on mechanical diaphragm metering pump driven by motor through turbine worm, which is suitable for low-pressure fluid metering.

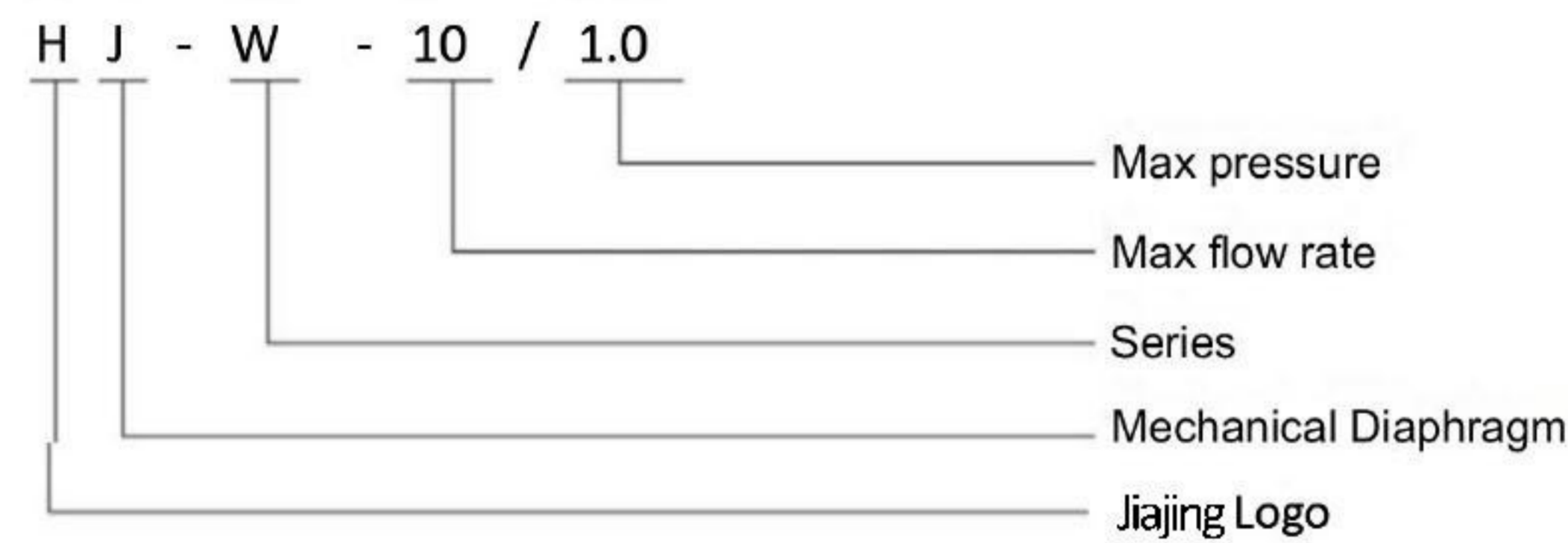
Diaphragm metering pump uses flexible diaphragm to replace piston. Driven by actuator, the diaphragm moves back and forth, which changes the volume of pump chamber and sucks and discharges liquid under the action of pump inlet and outlet valves.

According to the needs of various process, the flow rate of diaphragm metering pump can be steplessly adjusted in the range of 0-100%, thus quantitatively transmitting corrosive and non-corrosive liquid without solid particles. The pump head is equipped with a variety of materials (PTFE, PVC, PVDF, SS304, 316, 316L).

With high-tech structural design, the diaphragm metering pump can completely isolate the flow liquid from the driver by diaphragm, and the latest PTFE and rubber composite diaphragm is adopted, which has strong corrosion resistance, thus greatly improving the service life of the diaphragm.



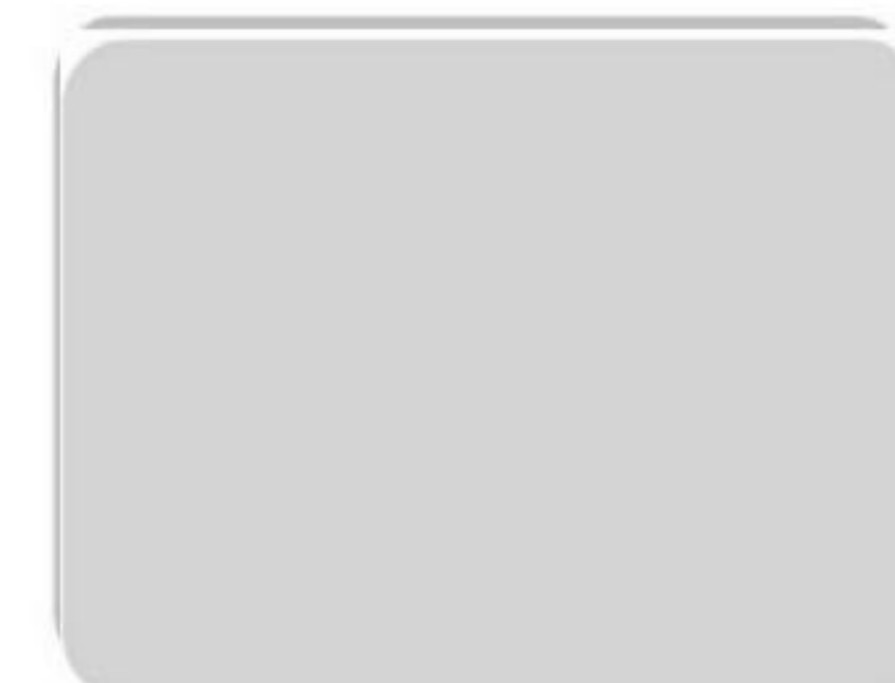
■ Model Example



DIAPHRAGM-TYPE METERING PUMP

Quality, Expertise, Innovation, Reliability.

Agriculture, Chemicals, Oil & Gas, Industry, Water



HAOSH®-H Series Electronic Metering Pump

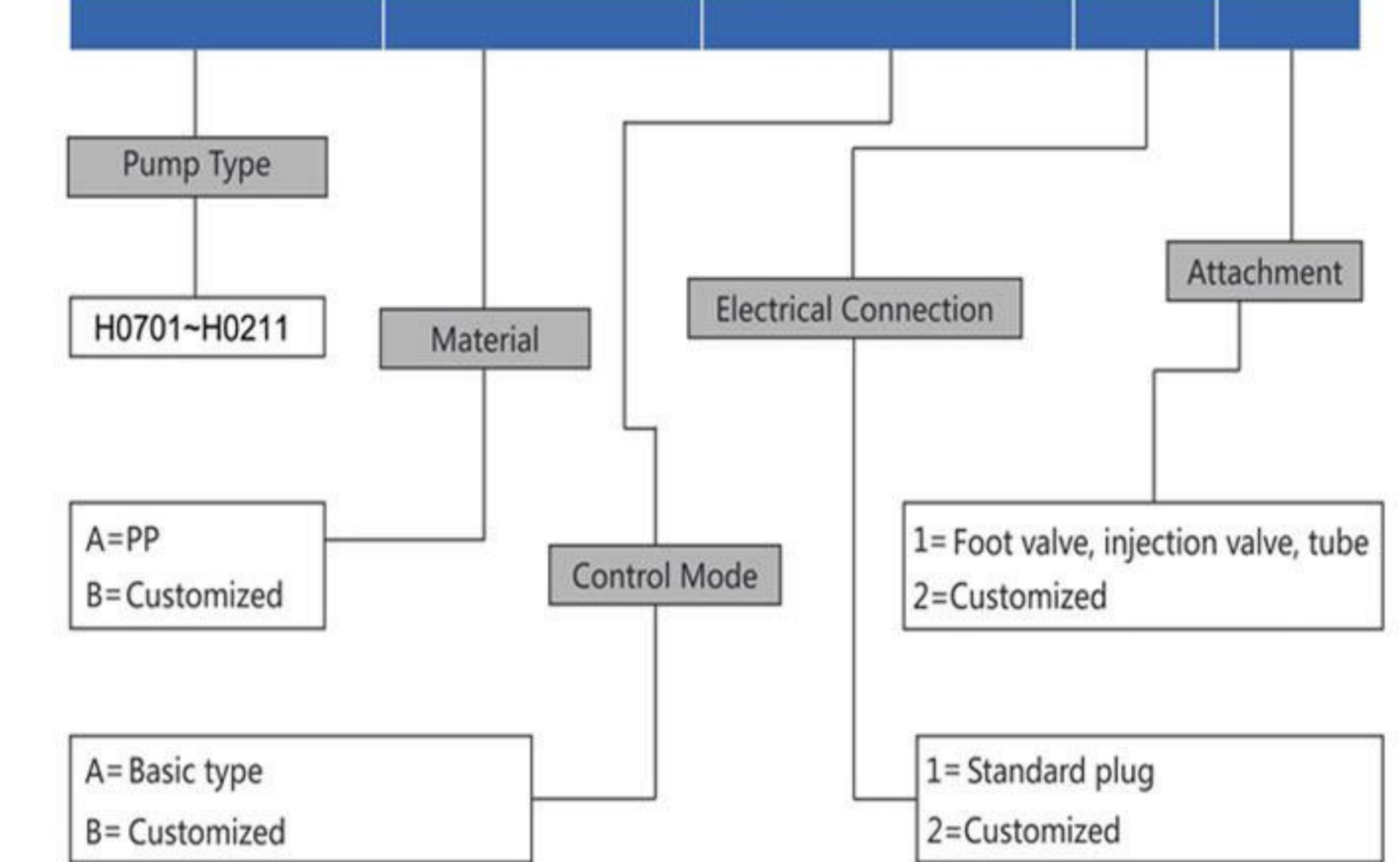
Domestic high quality parts
Easy to use and economical



Advantages and features:

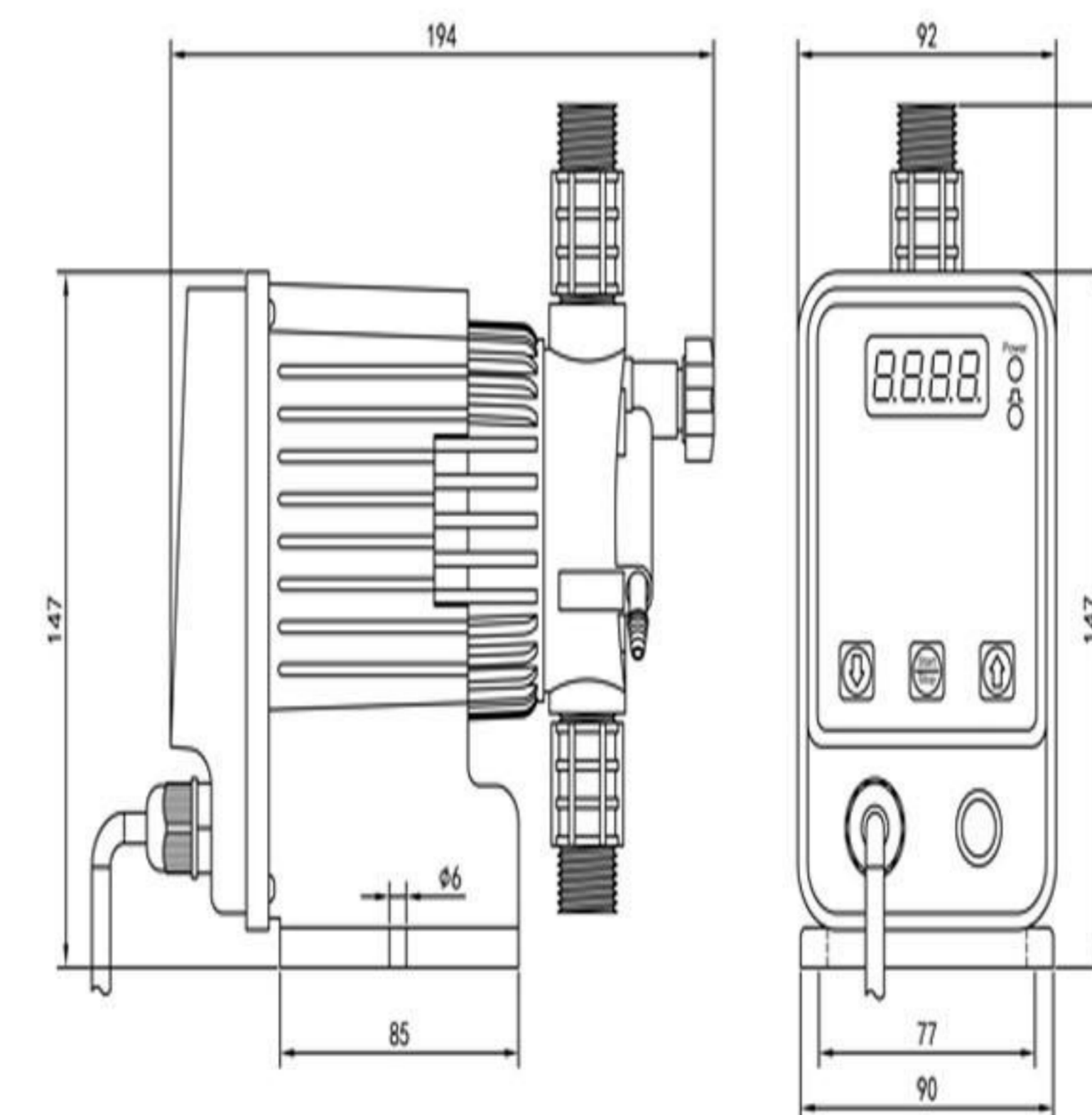
- 1 Taiwan brand plastic raw material, high strength and corrosion resistance.
- 2 LED display, intuitive and convenient to use.
- 3 The valve seat is made of PTFE, which is more corrosion resistant.
- 4 The structure design is simple and the price is economical.

HAOSH®-H Series Electronic Metering Pump



Installation Dimension

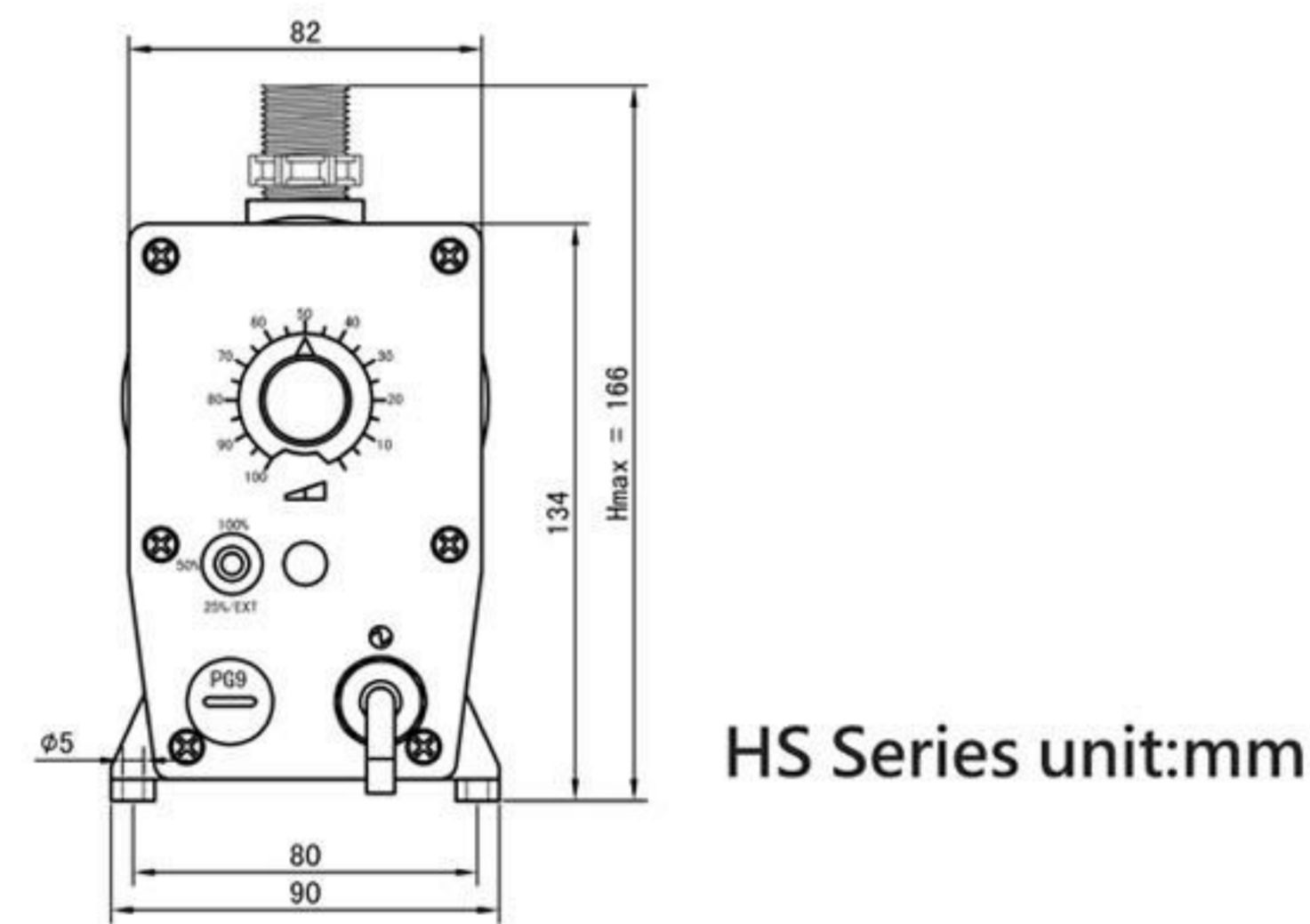
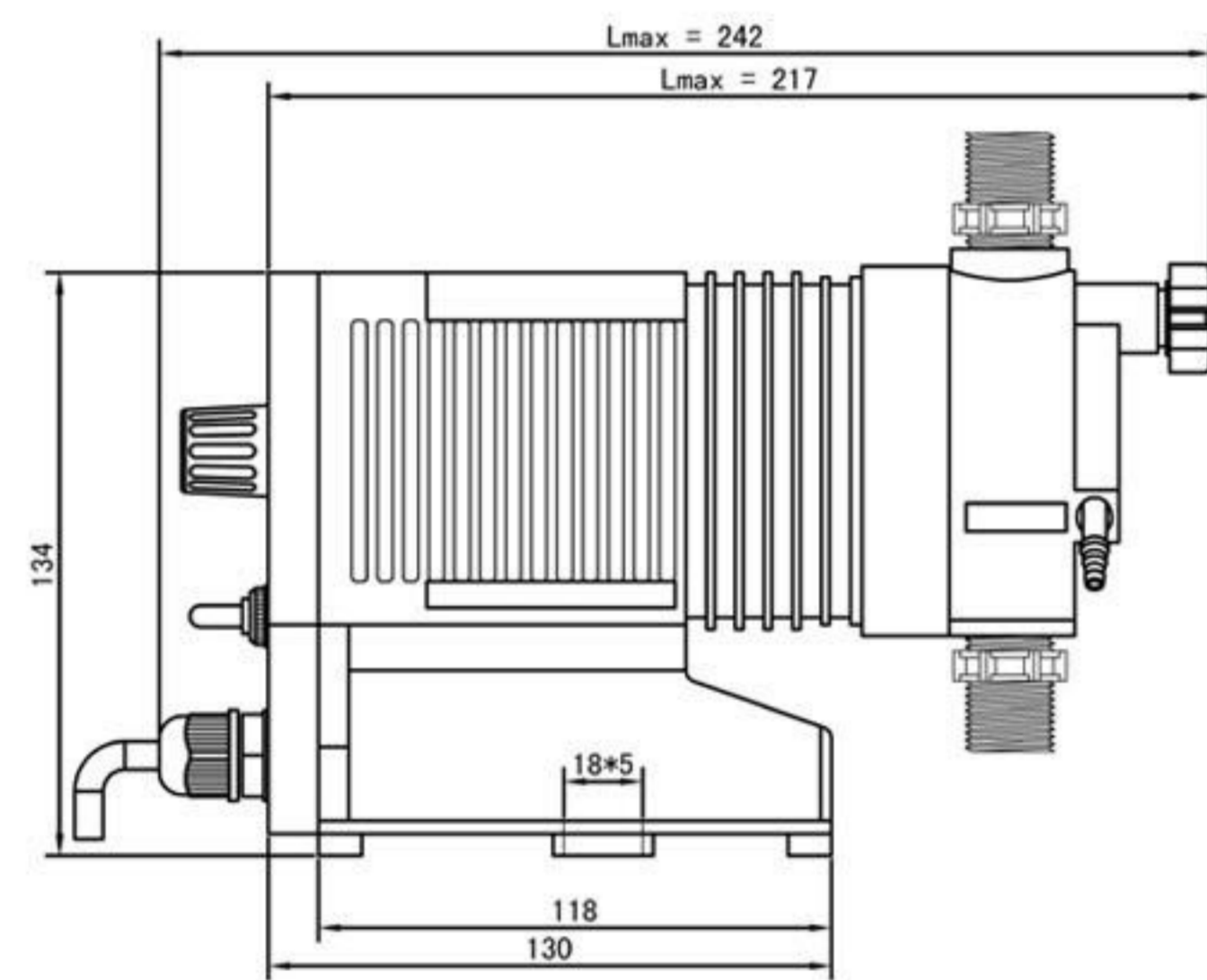
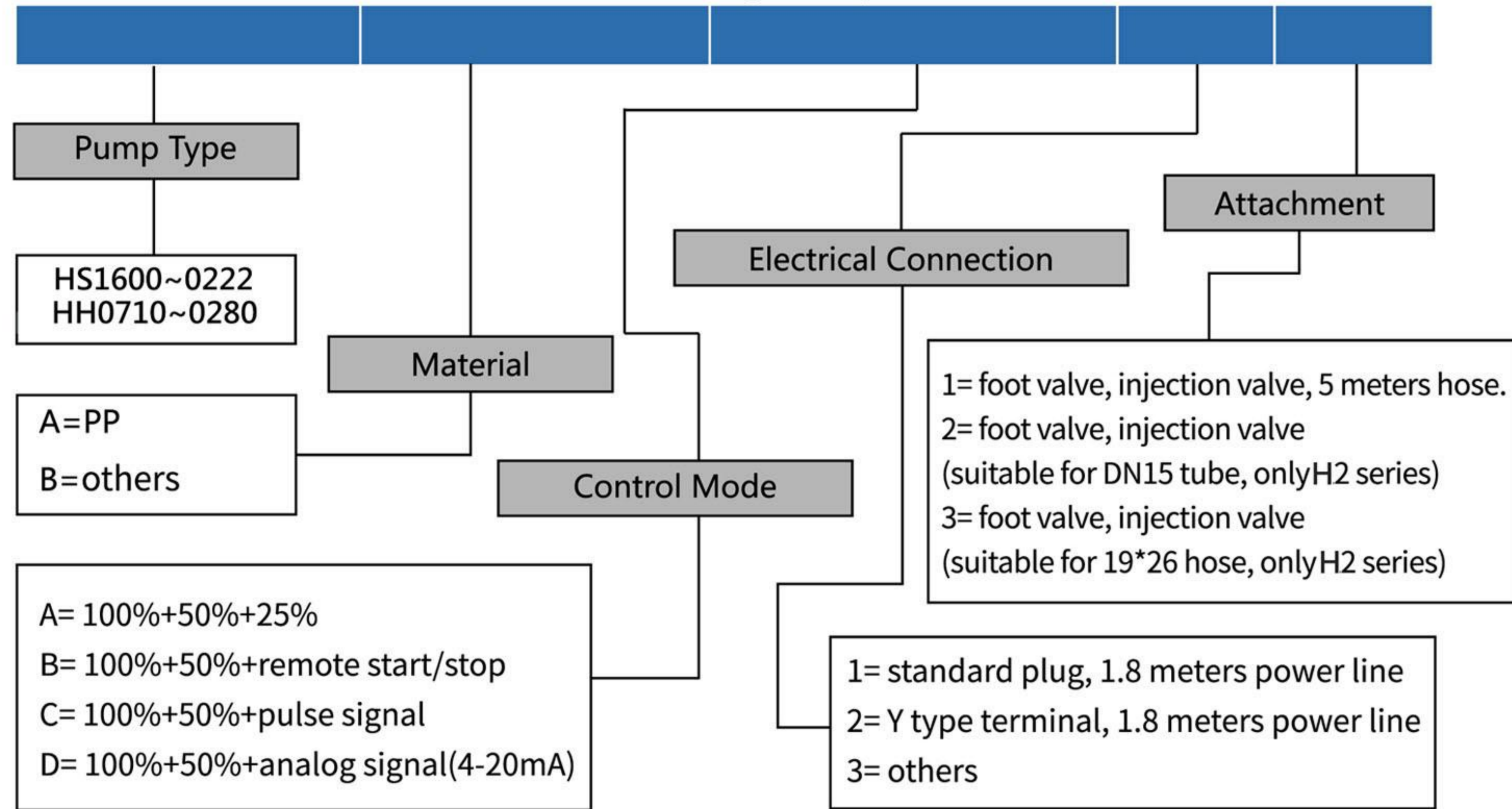
Unit : mm



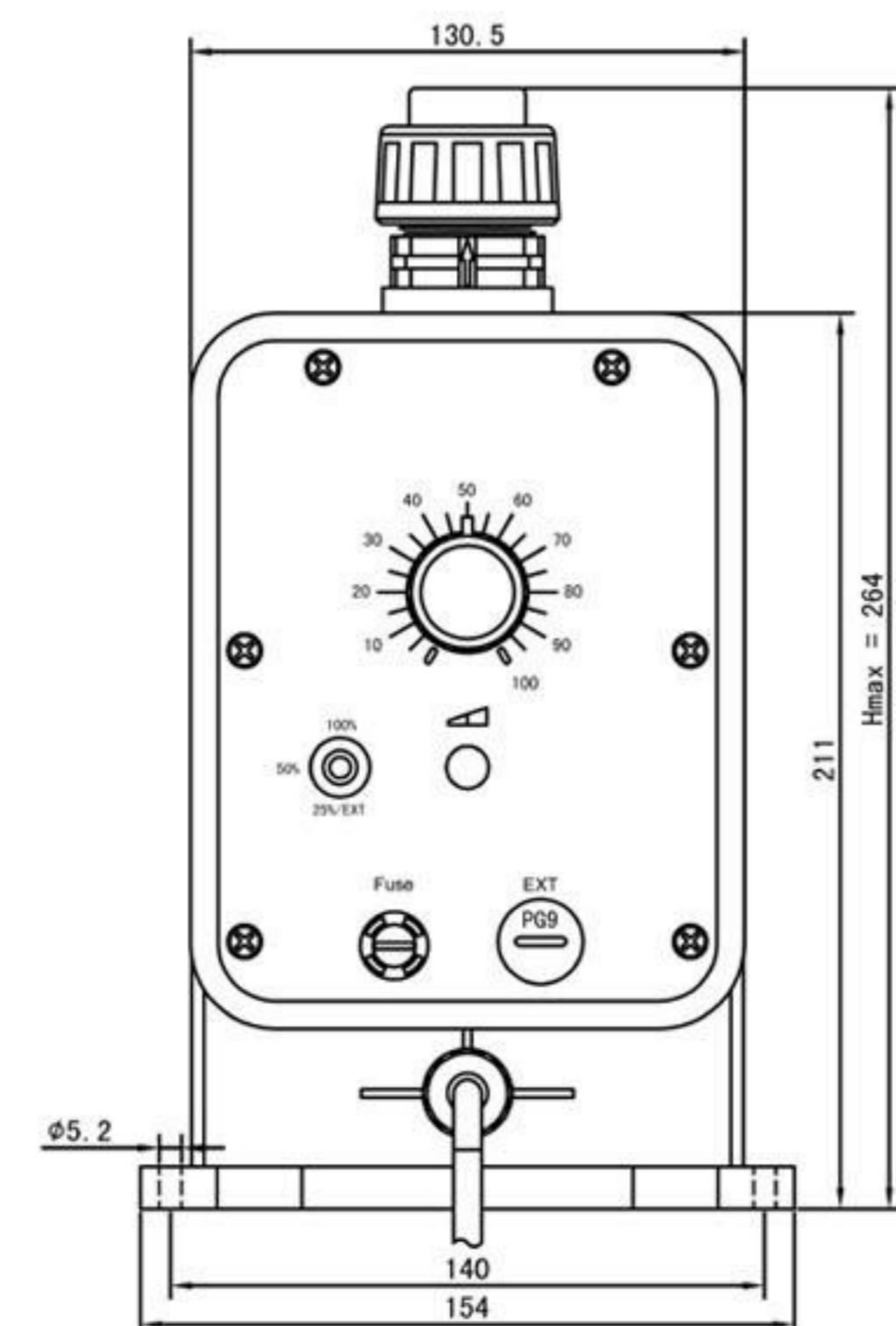
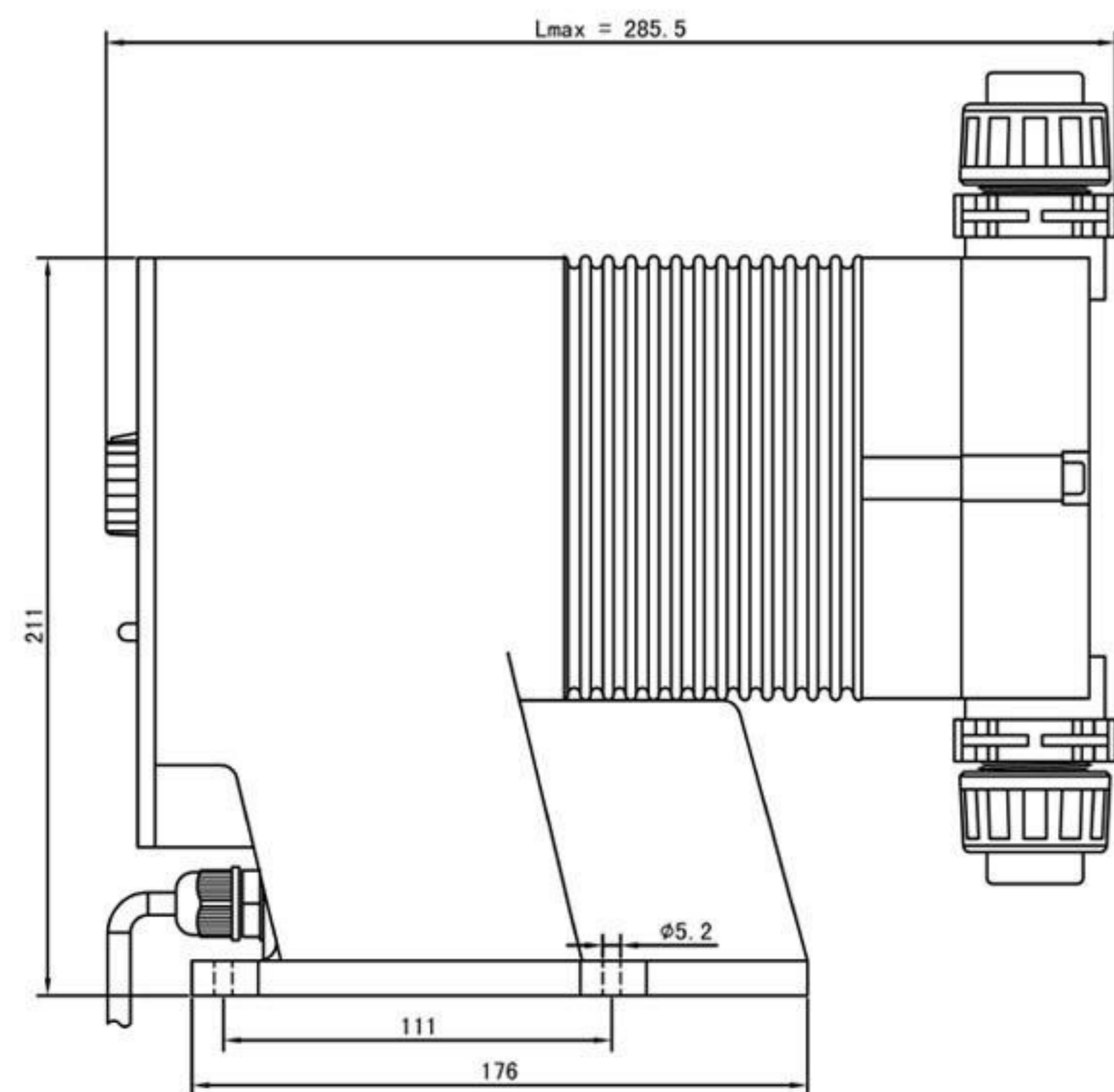
Technical Data				
Model	Pressure (Bar)	Flow (L/H)	Power (W)	Connection Size
H0701	7	1	24	6*4mm
H0702	7	2	24	6*4mm
H0703	7	3	24	6*4mm
H0704	7	4	24	6*4mm
H0506	5	6	24	6*4mm
H0309	3	9	24	6*4mm
H0211	1.5	11	24	6*4mm

Liquid Ends Material		
Component	Standard	Optional
Pumphead	PP	/
Diaphragm	PTFE	/
Valve body	PP	/
Valve ball	Ceramics	PTFE
Valve seat	PTFE	/
Valve spring	Hastelloy	/
Seals	FPM	EPDM

HAOSH® HS&HH Series Electronic Metering Pump



HS Series unit:mm



HH Series unit:mm

Technical Data

Model	Pressure(Bar)	Flow(L/H)	Speed(Strokes/Min)	Connection Size(Inch)
HS1600	16	0.4	60	3/8" * 1/4"
HS1601	16	0.6	90	3/8" * 1/4"
HS1602	16	0.8	120	3/8" * 1/4"
HS1200	12	0.6	90	3/8" * 1/4"
HS1201	12	0.8	120	3/8" * 1/4"
HS1202	12	1.2	180	3/8" * 1/4"
HS0803	8	3	90	3/8" * 1/4"
HS0804	8	4	120	3/8" * 1/4"
HS0806	8	6	180	3/8" * 1/4"
HS0306	3	5.5	90	3/8" * 1/4"
HS0308	3	7.3	120	3/8" * 1/4"
HS0311	3	11	180	3/8" * 1/4"
HS0211	1.5	11	90	3/8" * 1/4"
HS0215	1.5	14.5	120	3/8" * 1/4"
HS0222	1.5	22	180	3/8" * 1/4"
HH0710	7	10	60	3/8" * 1/4"
HH0715	7	15	90	3/8" * 1/4"
HH0720	7	20	120	3/8" * 1/4"
HH0416	4	16	60	3/8" * 1/4"
HH0424	4	24	90	3/8" * 1/4"
HH0432	4	32	120	3/8" * 1/4"
HH0240	1.5	40	60	DN15/19*26
HH0260	1.5	60	90	DN15/19*26
HH0280	1.5	80	120	DN15/19*26

Liquid Ends Material

Component	Standard	Optional
Pumphead	PP	/
Diaphragm	PTFE	/
Valve body	PP	/
Valve ball	CERAMICS	/
Valve seat	FPM	PTFE
Valve spring	HASTELLOY	/
Seals	FPM	EPDM

HJ-W Series Mechanical Diaphragm Dosing Pump

Main performance parameters

- ☆ Maximum flow: 60L/h
- ☆ Maximum discharge pressure: 10 bar
- ☆ Steady state accuracy ±2%
- ☆ The suction lifting height can be up to 1.5m water column
- ☆ Maximum ambient temperature: +40℃

Main characteristics

Liquid end

- ☆ The diaphragm is mechanically driven, and there is no diaphragm guard on the material side to facilitate the passage of materials
- ☆ PVC, PVDF, 316SS and other pump head materials are available, suitable for conveying various materials
- ☆ Self-cleaning check valve structure

Drive end

- ☆ Reducer drives eccentric mechanism to ensure smooth flow delivery
- ☆ Enhanced structure design, suitable for harsh operating environment
- ☆ Using special bearing support, grease lubrication, stable work, reliable, low noise, low maintenance cost

Main application

- ☆ Environmental protection, petrochemical industry, chemical industry, oil refining, electric power, metallurgy, medicine, food, water treatment and other fields.

Liquid end	Pump head	Valve body	Valve seat	Ball	Diaphragm	Seal ring	Connecting
PVC	PVC	PVC	PVDF	Zirconia	PTFE composite diaphragm	Viton	PVC
PVDF	PVDF	PVDF	PVDF	Zirconia	PTFE composite diaphragm	Viton	PVDF
316SS	316SS	316SS	316SS	Zirconia	PTFE composite diaphragm	Viton	316SS

Standard configuration motor performance parameters

- ☆ Power supply: 380V/220V-50Hz/60Hz/three-phase/single-phase
- ☆ Protection level: IP54
- ☆ Insulation class: Class F
- ☆ All motors comply with IEC or NEC standards



Model definition of HJ-W series mechanical diaphragm metering pump

Series Flow Liquid end Interface Motor

Series

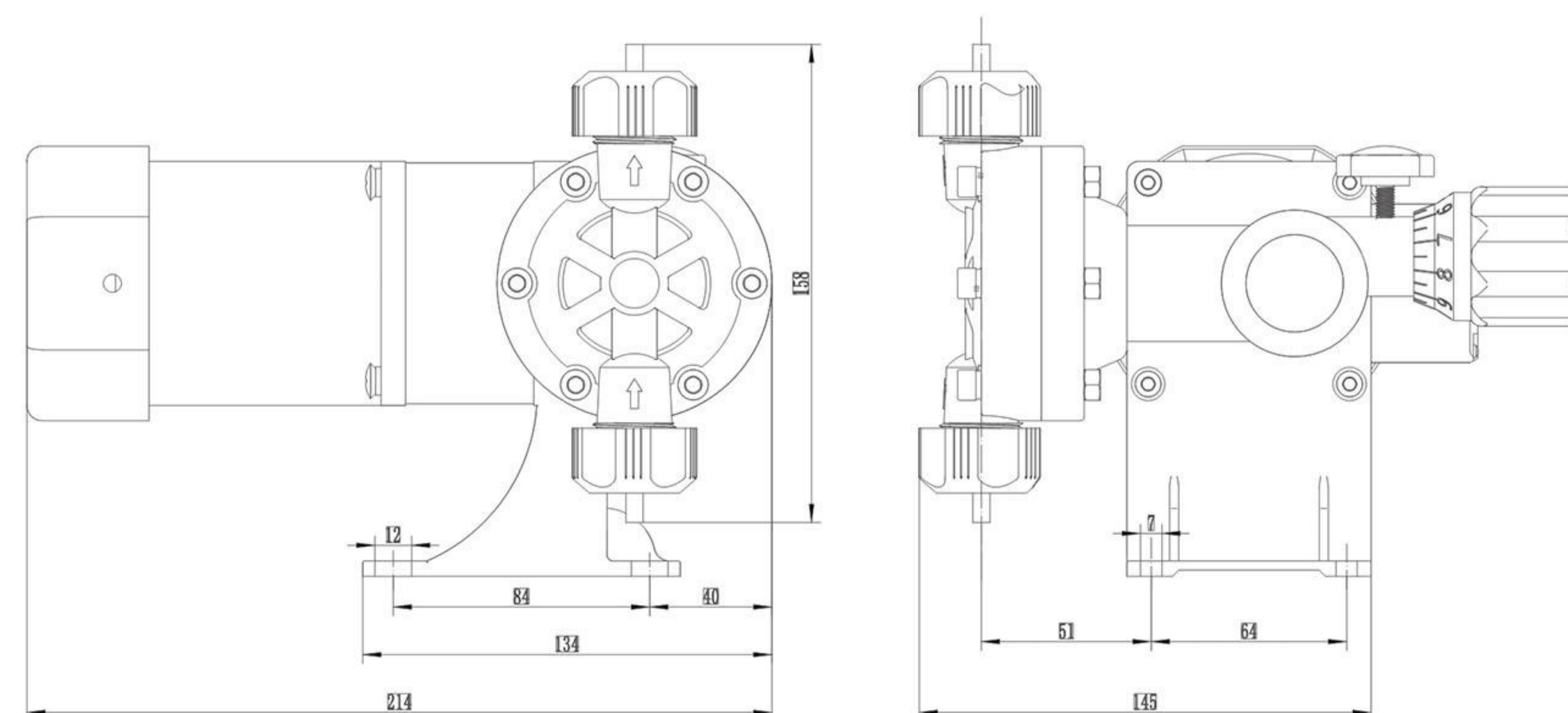
Code	Description
	Mechanical diaphragm metering pump

Flow

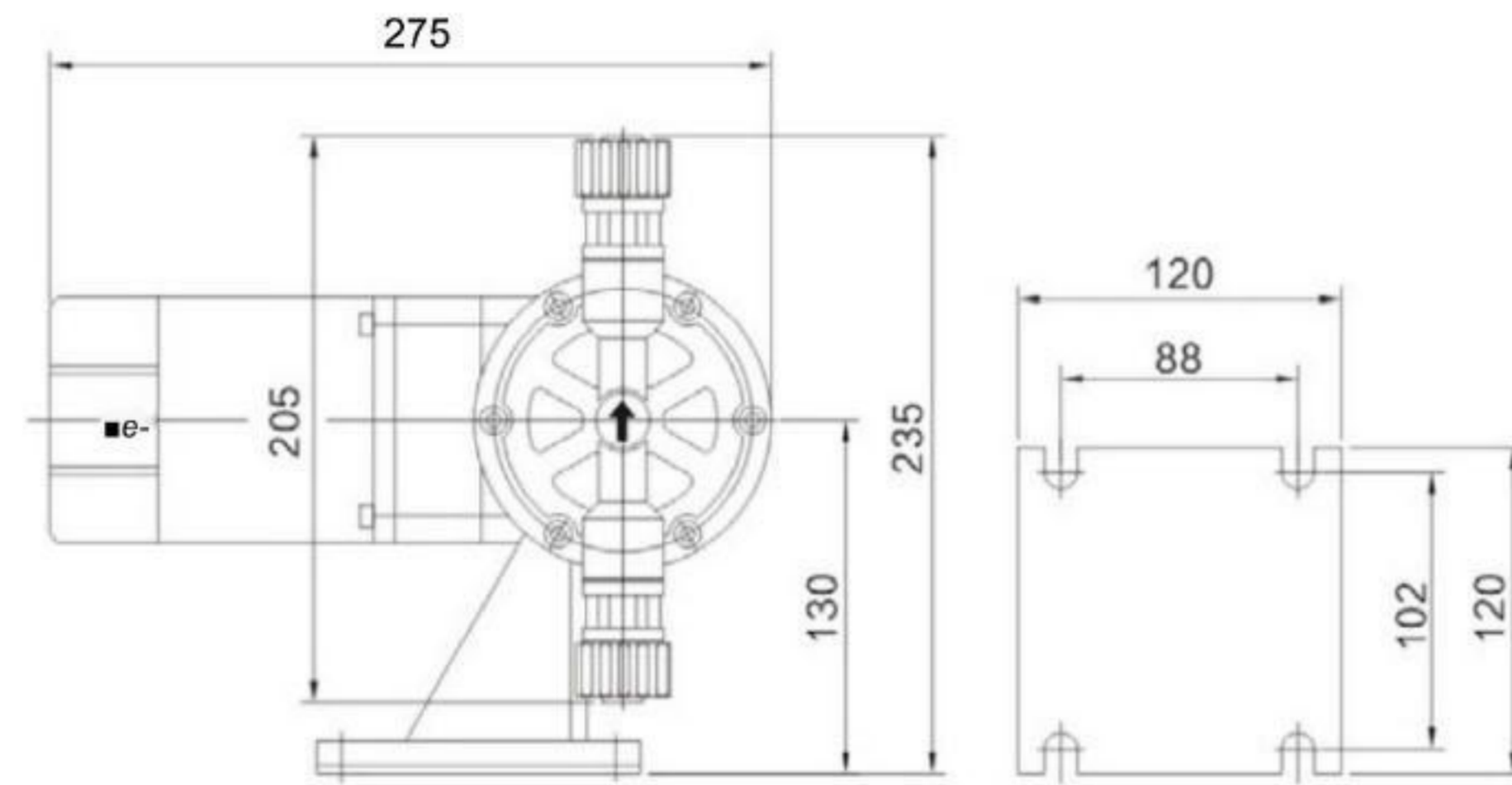
Code	Max flow(L/H)	Pressure mpa	Motor power(W)
HJ-W 5/1.0	5	1.0	25
HJ-W 6/1.0	6	1.0	25
HJ-W 15/1.0	15	1.0	25
HJ-W 24/1.0	24	1.0	25
HJ-W 30/1.0	30	1.0	40
HJ-W 40/0.5	40	0.5	40
HJ-W 50/0.5	50	0.5	40
HJ-W 60/0.5	60	0.5	40

Liquid end

Code	Description	Code	Description
P	PVC liquid end	T	PVDF liquid end
S	316 liquid end	V	High viscosity application: PVC liquid end
Z	Special material hydraulic end, please specify when ordering		



HJ-L Mechanical Diaphragm Dosing Pump



• Performance Parameters

MODEL	Max Flow rate (L/H)	Max Pressure (Mpa)	Stroke (mm)	Stroke Rate (SPM)	Diaphragm diameter	Connections (mm)	Weight (KG)	Motor Powers (W)
HJ-L6.5/1	6.5	1.0	3.0	56	65	d:φ10 D:φ14 PE hose	7.3	Induction motor
HJ-L12/1	12	1.0	4.0	56				
HJ-L24/1	24	1.0	4.0	93				
HJ-L32/1	32	1.0	4.0	108				
HJ-L40/1	40	1.0	4.0	135	84	DN15	8.5	Induction motor 90W;
HJ-L60/1	60	1.0	4.0	108				
HJ-L80/0.5	80	0.7	4.0	135				
HJ-L100/0.5	100	0.5	5.0	135				
HJ-L120/0.5	120	0.5	4.0	180				
HJ-L150/0.3	150	0.3	5.0	180				
HJ-L180/0.3	180	0.3	5.0	180				
HJ-L180/0.3	180	0.3	5.0	180				

• Product features

- No leakage in structure
- Suitable for all kinds of acid and alkali resistant medicinal liquids.
- Can be installed on medicine trough.
- Easy installation, easy maintenance.
- High operational safety.
- When running, the liquid flow rate can be adjusted at will.



• Material

Pump Head	Diaphragm	Ball valve	valve seat, O ring
304	PTFE/EPDM	Ceramic	PTFE/EPM
316			
PVC			

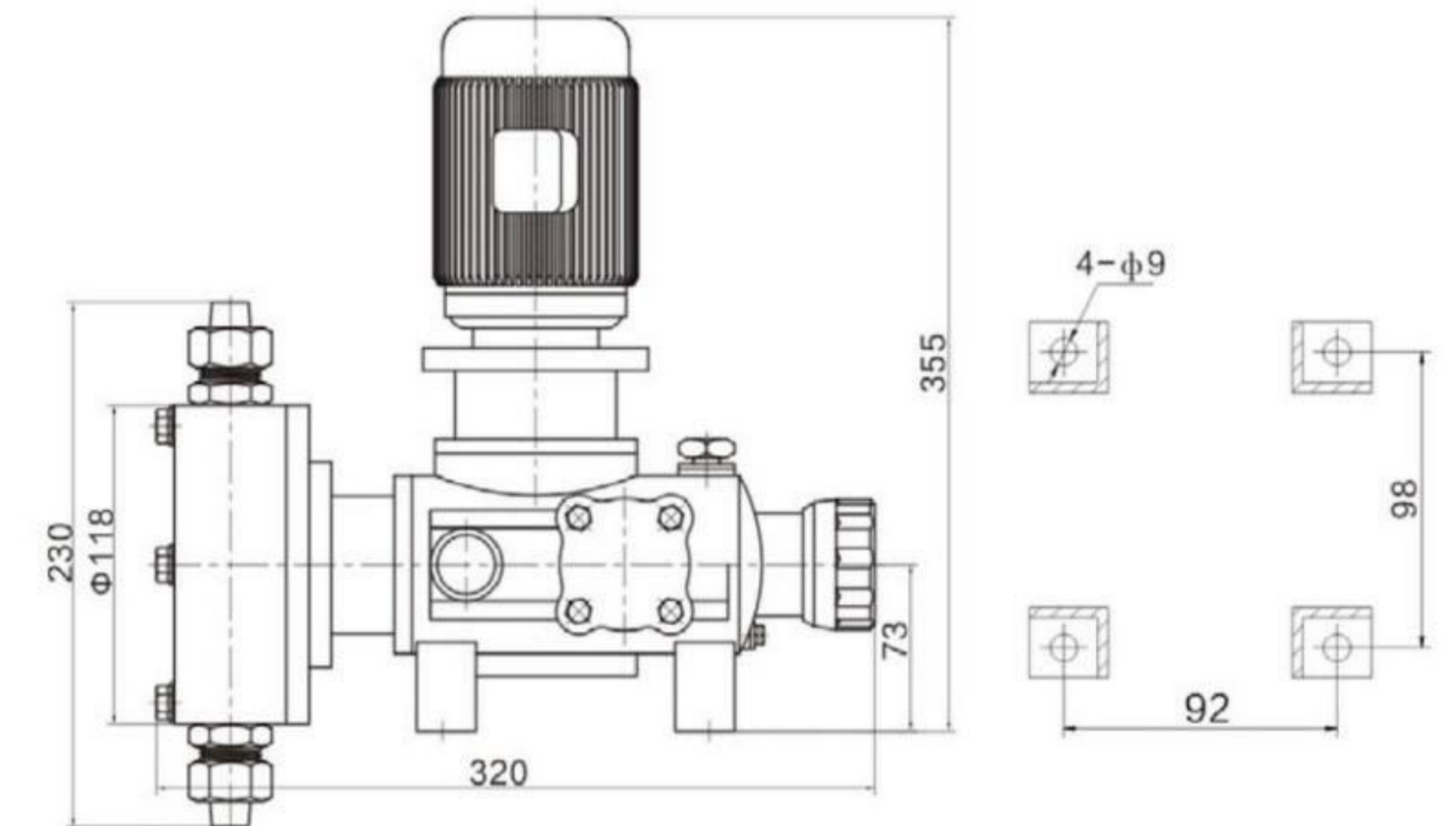
HD Mechanical Diaphragm Dosing Pump

• Product features

- operational safety, mechanically driven diaphragm.
- Good sealing, leak-free, simple and safe for assembly and maintenance.
- This equipment can transport high viscosity media, corrosive liquids and dangerous chemicals.
- Flow regulation can be achieved by adjusting stroke length and motor frequency.
- The diaphragm is formed by multi-layer composite structure. The first layer is super-tough Teflon acid-resistant film, the second layer is EPDM elastomer, the third layer is 3.0mm SUS304 supporting iron core, the fourth layer is reinforced nylon fiber cloth, and the fifth layer is completely covered by EPDM elastomer, which can effectively improve the service life of the diaphragm.
- The service life of the diaphragm is improved with the addition of stainless steel reinforcing plate design behind the diaphragm.
- A metering pump digital controller can be equipped to achieve local and remote control.

• Standard : pump head-PVC, Motor-380V 50Hz.

•Option: Pump Head 304、316、PTFE、
420V, 220V and 110V Motors are available.
Explosion-proof motor, frequency conversion motor;



• Performance Parameters

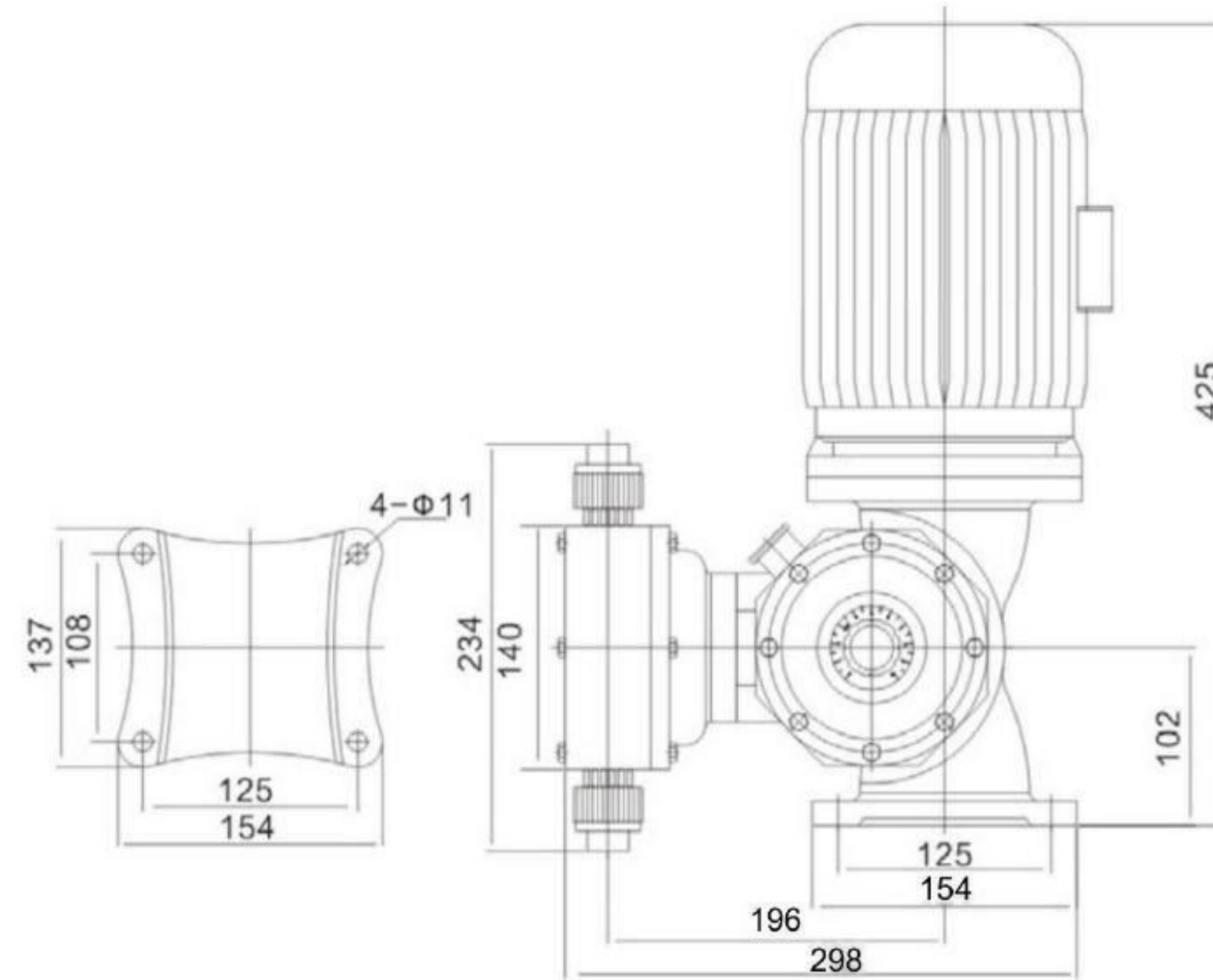
MODEL	Max Flow rate (L/H)	Max Pressure (Mpa)	Stroke Speed (SPM)	Motor Powers (W)	Connections (mm)	Weight (KG)	
HD 20/1.0	20	1.0	48	0.18	d:10 D:14 PE Hose	8	
HD 40/1.0	40	1.0	96				
HD 60/1.0	60	1.0	48				
HD 80/0.7	80	0.7	96				
HD120/0.5	120	0.5	96		DN15		
HD180/0.5	180	0.5	144				
HD240/0.3	240	0.3	144				0.25
HD240/0.3	240	0.3	144				0.25

HJ-Z Mechanical Diaphragm Dosing Pump

In order to meet user's needs on metering pump products, the user should provide the following parameters as far as possible when choosing and ordering:

- A: Liquid
- B: Flow rate (L/H);
- C: System pressure (Mpa);
- D: Medium temperature (°C)
- E: Transport medium viscosity (CP);
- F: specific gravity;
- G: Solid content;
- H: Automatic (manual) control mode;
- I: External control signal type;

Standard : pump head-PVC, motor-380V 50Hz;
 •Option: Pump Head 304、316、PTFE 420V, 220V and 110V motors are available.
 Explosion-proof motor, frequency conversion motor;



• Performance Parameters

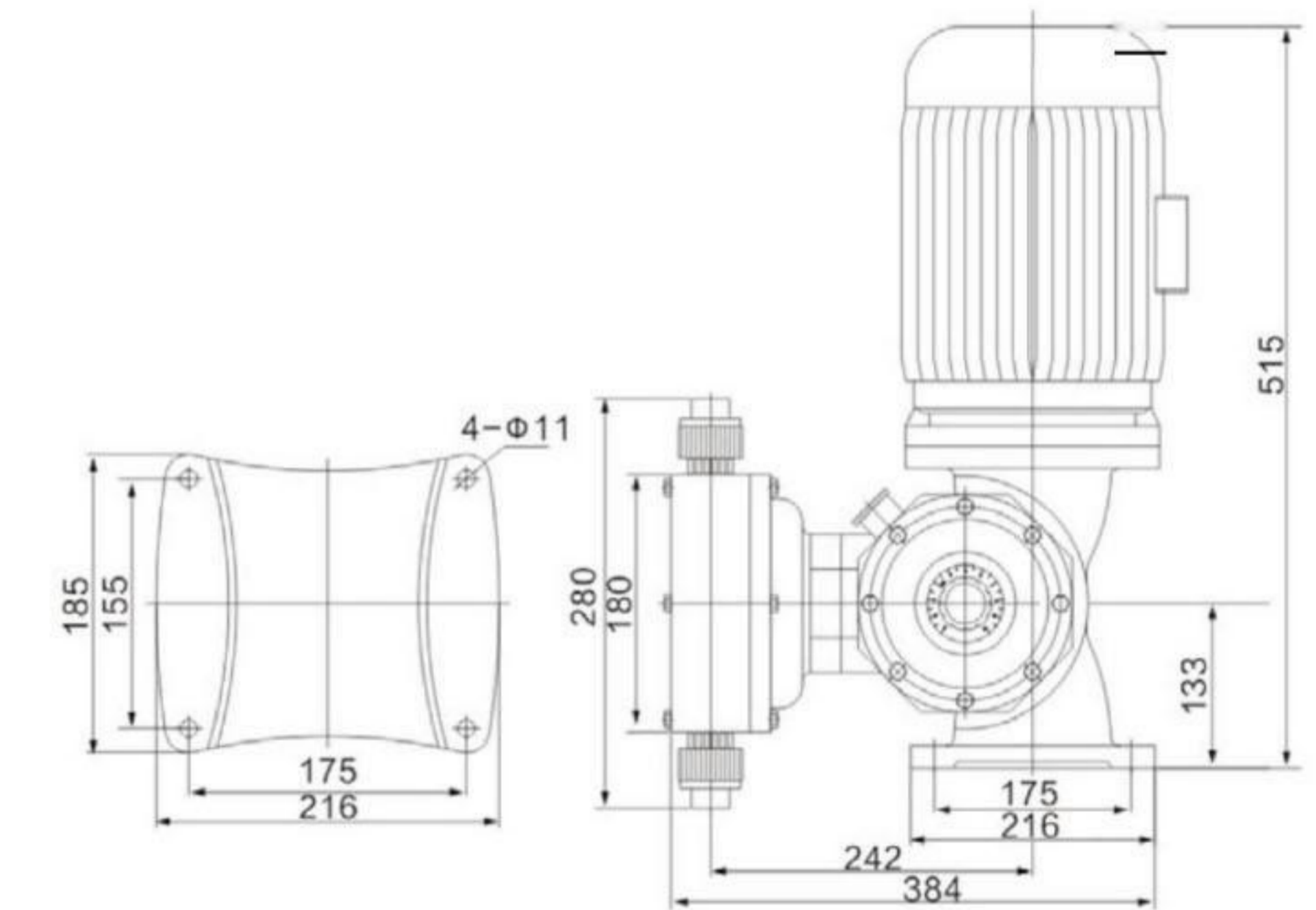
MODEL	Max Flow rate (L/H)	Max Pressure (Mpa)	Stroke Speed (SPM)	Motor Powers (W)	Connections (mm)	Weight (KG)
HJ-Z 25/1.0	25	1.2	48	0.37	d:10 D:14 PE Hose	22
HJ-Z 50/1.0	50	1.2	48	0.37		
HJ-Z 80/0.7	80	0.7	96	0.37	DN15	22
HJ-Z 120/0.7	120	0.7	96			
HJ-Z 170/0.7	170	0.7	96			
HJ-Z 240/0.7	240	0.7	96			
HJ-Z 320/0.5	320	0.5	144	0.55	DN25	28
HJ-Z 420/0.5	420	0.5	144			
HJ-Z 500/0.5	500	0.5	144			

HJ-D Mechanical Diaphragm Dosing Pump

The main parts of mechanical diaphragm metering pump are made of precision casting and numerical control processing. The structural design of the liquid receiving end ensures that the pump will not leak during operation. The material of the driving parts is sturdy and durable.

Due to the compact design, The equipment is easy to operate. Liquid flow can be easily adjusted by flow adjusting knob, and it is convenient for installation and maintenance.

Standard: Pump Head PVC Motor 380V 50Hz
 Option: Pump Head 304、316、PTFE Motor 420V、220V、110V、EX-Proof Motor x Variable Frequency Motor



• Performance Parameters

MODEL	Max Flow rate (L/H)	Max Pressure (Mpa)	Stroke Speed (SPM)	Motor Powers (W)	Connections (mm)	Weight (KG)
HJ-D 380/0.6	380	1.0	48	0.75	DN25	40
HJ-D 500/0.6	500	1.0	96			
HJ-D 650/0.6	650	0.7	96	1.1	DN25	40
HJ-D 850/0.5	850	0.5	144			
HJ-D 1000/0.4	1000	0.4	144	1.5	DN40	50
HJ-D 1400/0.3	1400	0.3	144			
HJ-D 1800/0.3	1800	0.3	144			

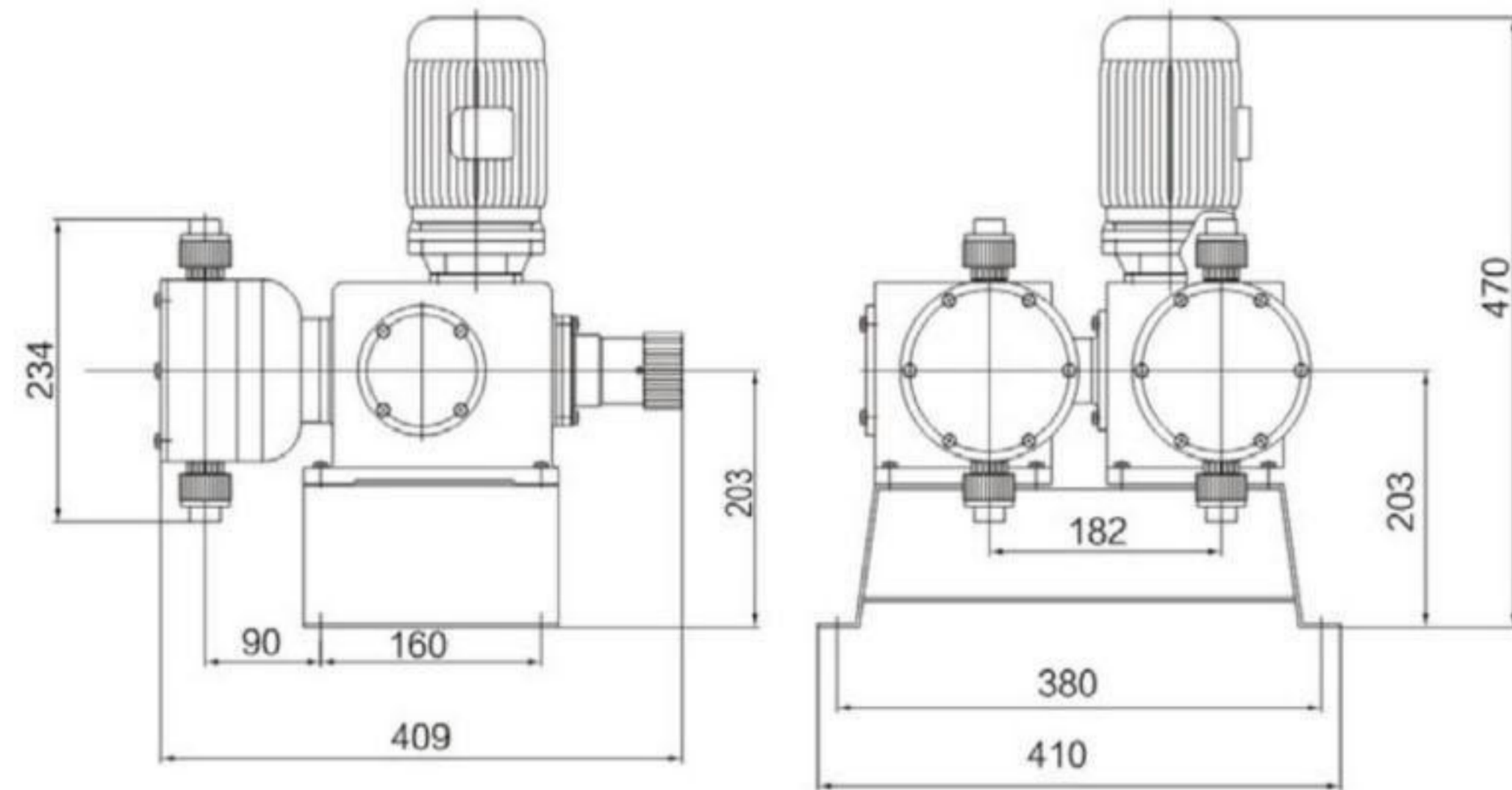
HJ-X2 Mechanical Diaphragm Dosing Pump

• Product features

- Flow Rate: 0-240L/H
- Pressure: 0-0.8MPA
- Moto Power: 370W, 220V/380V, 50/60Hz
- Motor Protection: IP54JP55

□ Material

- Pump Head: SUS304, SUS316, PVC, PTFE
- Diaphragm: PTFE
- Non-returning valve: SUS304, SUS316, PVC, PTFE
- Valve Ball: Zirconia, SUS304, SUS316, ceramic



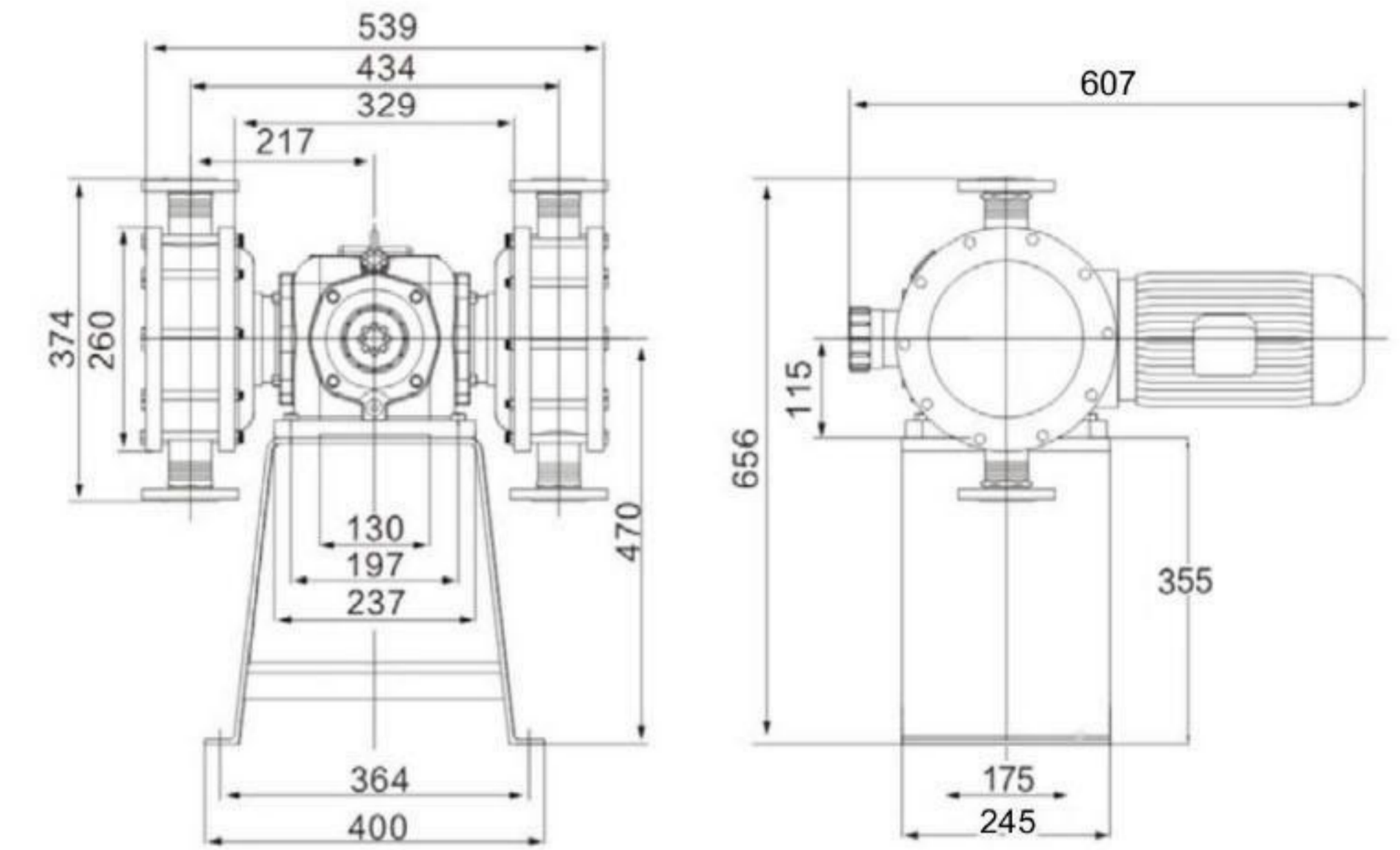
• Performance Parameters

MODEL	Max Flow rate (L/H)	Max Pressure (Mpa)	Stroke Speed (SPM)	Motor Powers (W)	Connections (mm)	Weight (KG)
HJ-X2 50/1.2	50	1.2	48	0.37	d:10 D:14 PE Hose	30
HJ-X2 100/1.0	100	1.0				
HJ-X2 160/0.7	160	0.7				
HJ-X2 240/0.6	240	0.6				
HJ-X2 350/0.4	350	0.4				
HJ-X2 480/0.4	480	0.4				
			96		DN15	

HJ-D2 Mechanical Diaphragm Dosing Pump

Standard: Pump Head PVC Motor 380V 50Hz

- Option: Pump Head 304, 316, PTFE, Motor 420V, 220V, 110V, EX-Proof Motor, Variable Frequency Motor

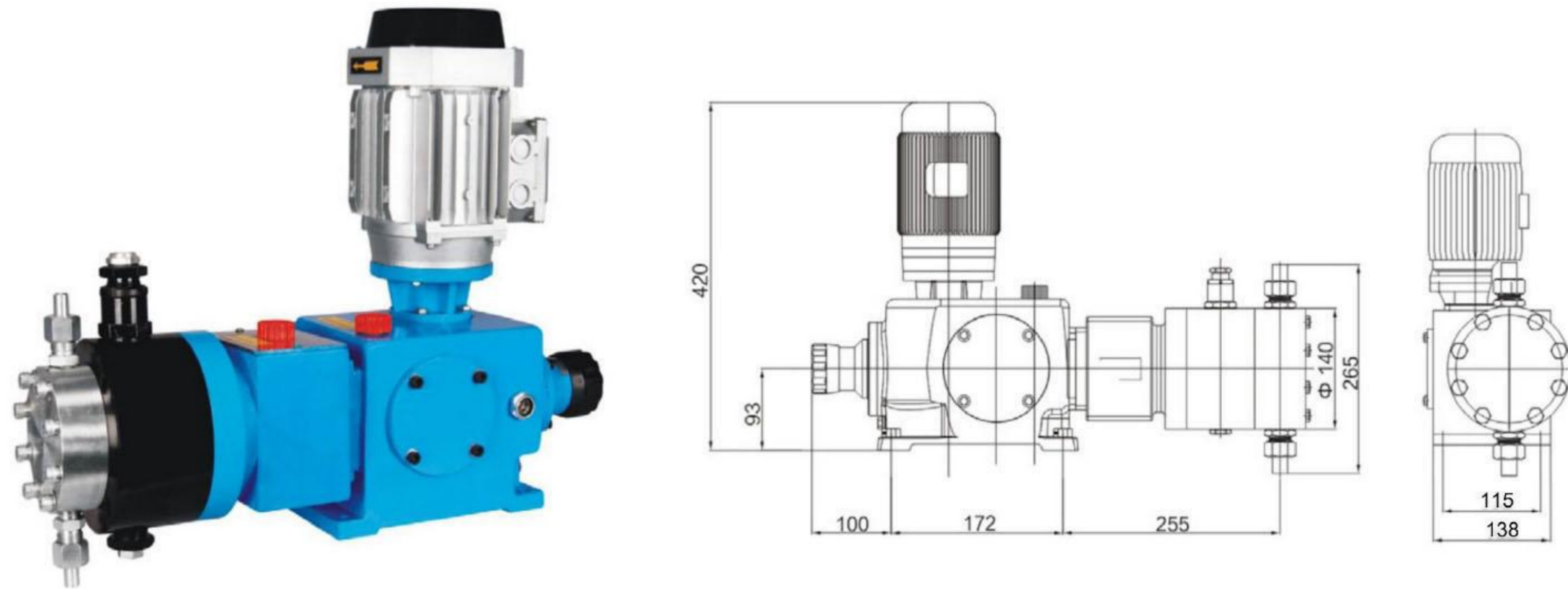


• Performance Parameters

MODEL	Max Flow rate (L/H)	Max Pressure (Mpa)	Stroke Speed (SPM)	Motor Powers (KW)	Connections (mm)	Weight (KG)
HJ-D2 1300/0.5	1300	0.5	127	1.5	DN25	70
HJ-D2 1700/0.5	1700	0.5				
HJ-D2 2000/0.4	2000	0.4				
HJ-D2 2800/0.3	2800	0.3	155		DN40	75
HJ-D2 3600/0.3	3600	0.3				
HJ-D2 4800/0.3	4800	0.3				
HJ-D2 5800/0.3	5800	0.3				
					DN50	

HY-X Hydraulic Metering Pump

- Pump** •Standard: Pump Head 304 Motor 380V 50Hz
 •Option: Pump Head 316、EX—Proof Motor、 Variable Frequency Motor
 Motor 420V、220V、110V

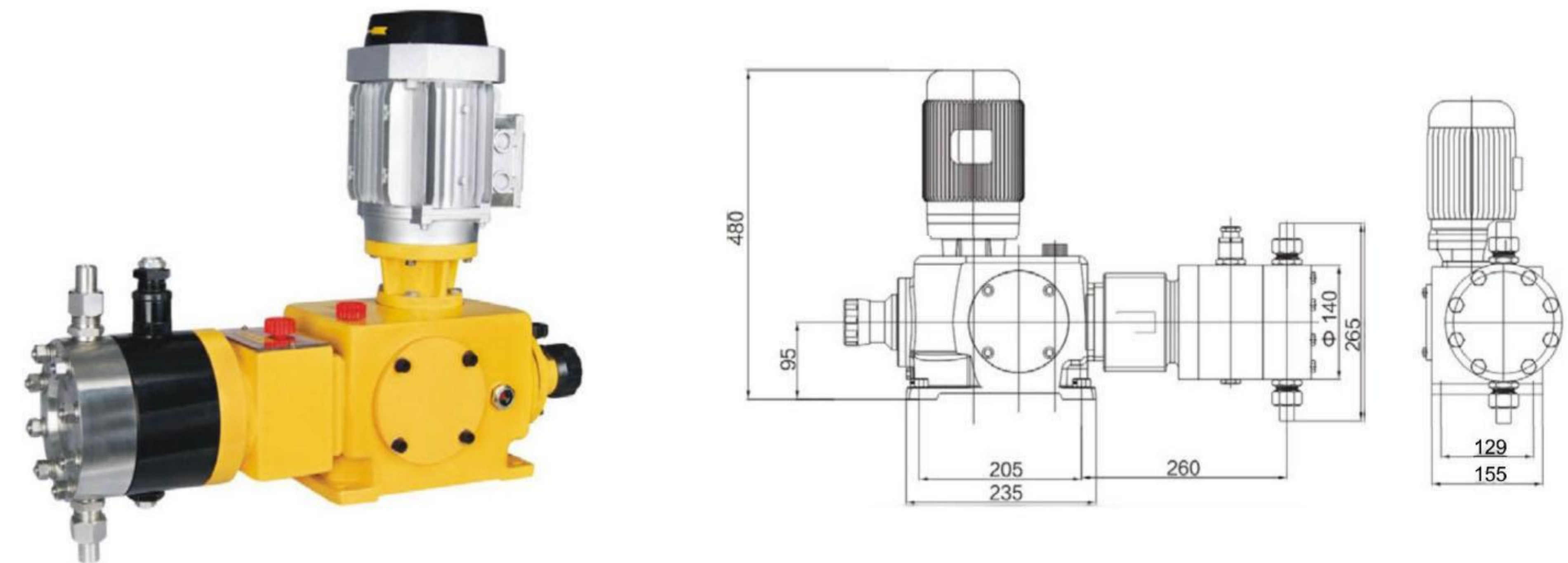


• Performance Parameters

MODEL	Max Flow rate (L/H)	Motor Powers(W)		Plunger diameter (mm)	Stroke length (mm)	Stroke Rate (SPM)	Connections (mm)	Weight (KG)
		0.37kw	0.55kw					
		Max Pressure(Mpa)						
HY-X 7/18(12)	7	12	18	10	20	96/144	6 welding	37
HY-X 10/14(9.0)	10	9.0	14	12				
HY-X 20/7.6(5.4)	20	5.4	7.6	16				
HY-X 35/6.8(5)	35	5	6.8	20				
HY-X 50/5.5(3)	50	3	5.5	25			10 welding	
HY-X 80/3.5(2.2)	80	2.2	3.5	28				
HY-X 135/2.5(1.7)	135	1.7	2.5	32				
HY-X 160/1.6(1.1)	160	1.1	1.6	35				
HY-X 180/1.3(0.9)	180	0.9	1.3	38			15	

HY-Z Hydraulic Metering Pump

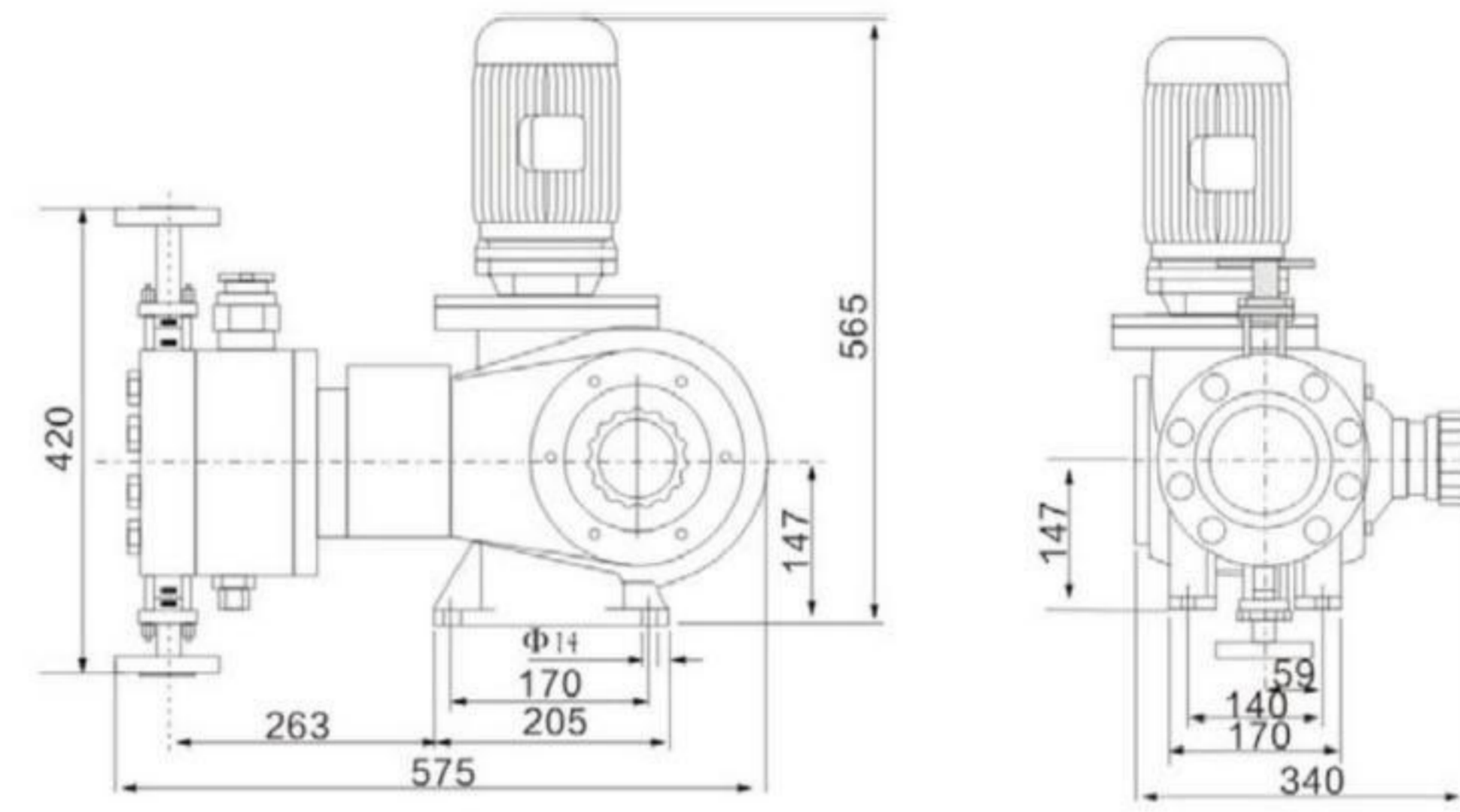
- Standard: Pump Head 304 Motor 380V 50Hz
 •Option: Pump Head 316、 EX-Proof Motor、 Variable Frequency Motor
 Motor 420Vs 220V、110V



• Performance Parameters

MODEL	Max Flow rate (UH)	Motor Powers(W)		Plunger diameter (mm)	Stroke length (mm)	Stroke Rate (SPM)	Connections (mm)	Weight (KG)
		0.55kw	0.75kw					
		Max Pressure(Mpa)						
HY-Z 10/20(15)	10	15	20	12	25	96/144	6 welding	74
HY-Z 15/20(15)	15	15	20					
HY-Z 22/10(8.0)	22	8.0	10					
HY-Z 35/10(8.0)	35	8.0	10	16				
HY-Z 40/7.2(5.4)	40	5.4	7.2				20	
HY-Z 70/6.0(4.5)	70	4.5	6.0	22				
HY-Z 90/4.5(3.5)	90	3.5	4.5	25				
HY-Z 135/3.2(2.4)	135	2.4	3.2	30			10 welding	
HY-Z 100/2.8(2.0)	100	2.0	2.8	32				
HY-Z 150/2.8(2.0)	150	2.0	2.8					
HY-Z 200/2.2(1.6)	200	1.6	2.2	36				
HY-Z 240/1.8(1.3)	240	1.3	1.8	40	15 flange			
HY-Z 300/1.4(1.0)	300	1.0	1.4	45				
HY-Z 400/1.1(0.8)	400	0.8	1.1	50				

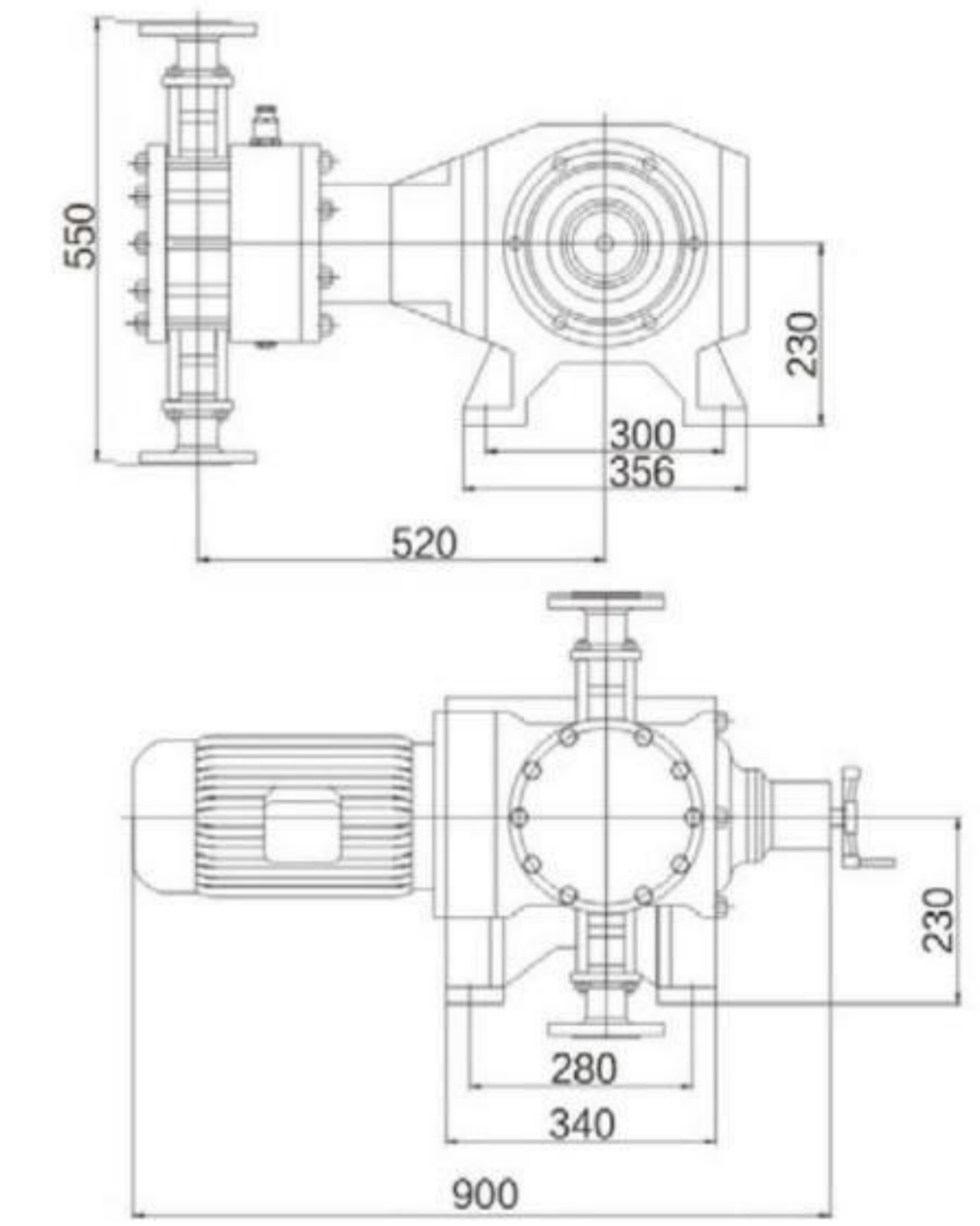
HY-ZR Hydraulic Metering Pump



• Performance Parameters

MODEL	Max Flow rate (L/H)	Motor Powers(W)		Plunger diameter (mm)	Stroke length (mm)	Stroke Rate (SPM)	Connections (mm)	Weight (KG)		
		1.1kw	1.5kw							
HY-ZR 28/22(16)	28	16	22	16	30	87/132	10 welding	140		
HY-ZR 45/20(14)	45	14	20	20						
HY-ZR 58/18(12)	58	12	18	22						
HY-ZR 75/12(8)	75	8	12	25						
HY-ZR 125/8.5(6.3)	125	6.3	8.5	32						
HY-ZR 160/6.5(4.2)	160	4.2	6.5	36			15 flange		155	
HY-ZR 200/5.6(3.6)	200	3.6	5.6	40						
HY-ZR 250/4.5(3.0)	250	3.0	4.5	45						
HY-ZR 320/3.5(2.8)	320	2.8	3.5	50						
HY-ZR 380/2.8(2.0)	380	2.0	2.8	55						
HY-ZR 460/2.4(1.6)	460	1.6	2.4	60			20 flange			162
HY-ZR 580/1.8(1.2)	580	1.2	1.8	60						
HY-ZR 700/1.6(1.0)	700	1.0	1.6	60						
HY-ZR 780/1.2(0.8)	780	0.8	1.2	65						
HY-ZR 900/0.9	900	0.5	0.9	75						
HY-ZR 1000/0.8	1000	0.5	0.8	80	25 flange	120				
HY-ZR 1200/0.6	1200	0.4	0.7	85						
HY-ZR 1350/0.6	1350	0.3	0.6	90						
HY-ZR 1500/0.5	1500	0.3	0.5	95						
							32 flange			

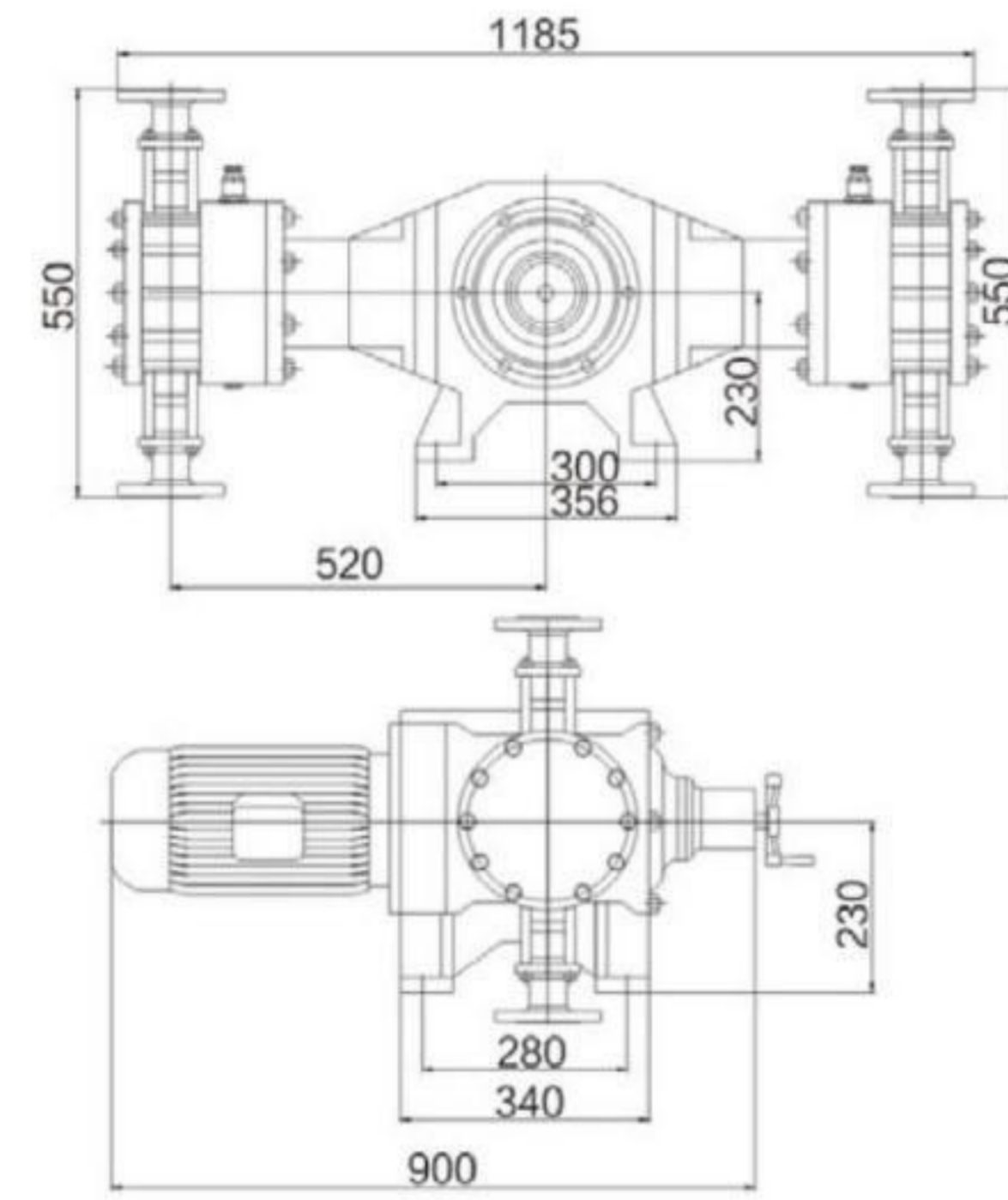
HY-D Hydraulic Metering Pump



• Performance Parameters

MODEL	Max Flow rate (L/H)	Max Pressure (Mpa)	Stroke Rate (SPM)	Stroke Rate (SPM)	Motor Powers (W)	Plunger diameter (mm)	Connections (mm)	Weight (KG)
HY-D 45/40	45	40	40	127	4	16	10	210
HY-D 45/30	45	30			3	16		
HY-D 70/28	70	28			4	20		
HY-D 70/20	70	20			3	20		
HY-D 105/28	105	28			4	20		
HY-D 105/20	105	20		3	20	15		
HY-D 165/18	165	18		4	25			
HY-D 165/13	165	13		3	25			
HY-D 270/11	270	11		4	32			
HY-D 270/8	270	8		3	32			
HY-D 320/10	320	10		4	35	20		
HY-D 320/7	320	7		3	35			
HY-D 420/6.8	420	6.8		4	40			
HY-D 420/5.5	420	5.5		3	40			
HY-D 550/5.8	550	5.8		4	45		25	
HY-D 550/4.2	550	4.2	3	45				
HY-D 680/4.5	680	4.5	4	50				
HY-D 680/3.5	680	3.5	3	50				
HY-D 820/3.8	820	3.8	4	55	40			
HY-D 820/2.8	820	2.8	3	55				
HY-D 1000/3	1000	3	4	60				
HY-D 1000/2.2	1000	2.2	3	60				
HY-D 1180/2.5	1180	2.5	4	65				
HY-D 1180/2	1180	2	3	65	25			
HY-D 1350/2.3	1350	2.3	4	70				
HY-D 1350/1.6	1350	1.6	3	70				
HY-D 1580/2	1580	2	4	75				
HY-D 2000/1.5	2000	1.5	4	85		40		
HY-D 2000/1.0	2000	1	3	85				
HY-D 2300/1.3	2300	1.3	4	90				
HY-D 2300/0.8	2300	0.8	3	90				
HY-D 2800/1	2800	1	4	100				
HY-D 3500/0.8	3500	0.8	4	110				

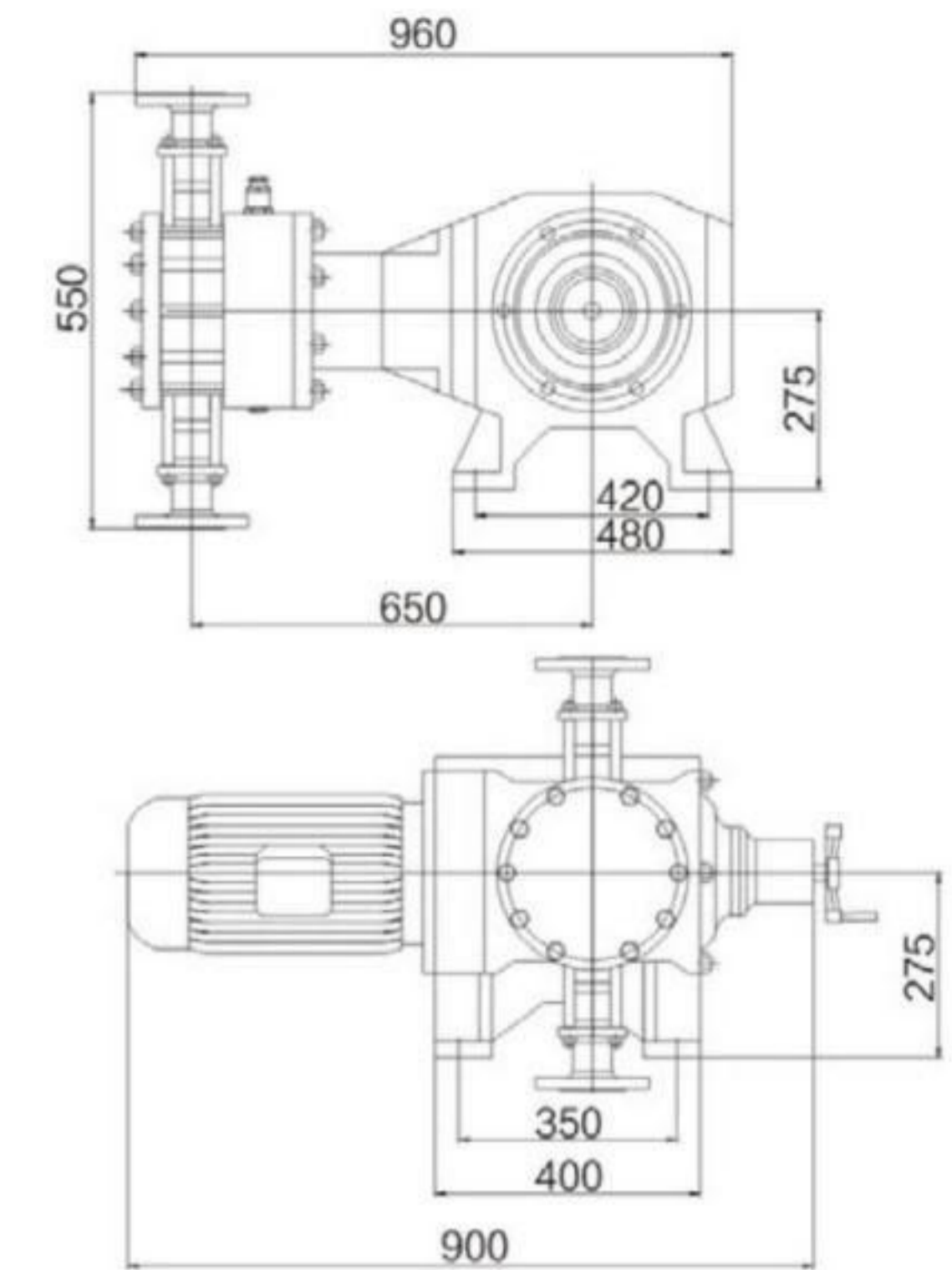
HY-D2 Hydraulic Metering Pump



• Performance Parameters

MODEL	Max Flow rate (L/H)	Max Pressure (Mpa)	Stroke length (mm)	Stroke Rate (SPM)	Motor Powers (W)	Plunger diameter (mm)	Connections (mm)	Weight (KG)			
HY-D2 90/40	90	40	40	127	4	16	10	280			
HY-D2 90/30	90	30			3	16					
HY-D2 140/28	140	28			4	20					
HY-D2 140/20	140	20			3	20					
HY-D2 210/28	210	28			4	20					
HY-D2 210/20	210	20			3	20					
HY-D2 330/18	330	18		155	15	4	25		15		
HY-D2 330/13	330	13				3	25				
HY-D2 540/11	540	11				4	32			20	
HY-D2 540/8	540	8				3	32				
HY-D2 640/10	640	10				4	35				25
HY-D2 640/7	640	7				3	35				
HY-D2 840/6.8	840	6.8	40		20	4	40	20			
HY-D2 840/5.5	840	5.5				3	40				
HY-D2 1100/5.8	1100	5.8				4	45		40		
HY-D2 1100/4.2	1100	4.2				3	45				
HY-D2 1360/4.5	1360	4.5				4	50			25	
HY-D2 1360/3.5	1360	3.5				3	50				
HY-D2 1640/3.8	1640	3.8		4	55	40					
HY-D2 2000/3	2000	3		3	60		25				
HY-D2 2360/2.5	2360	2.5		4	65			40			
HY-D2 2700/2.3	2700	2.3		3	70				40		
HY-D2 3160/2	3160	2		4	75					40	
HY-D2 3600/1.8	3600	1.8		3	80						40
HY-D2 4000/1.5	4000	1.5	4	85	40						
HY-D2 4600/1.3	4600	1.3	3	90		40					
HY-D2 5600/1	5600	1	4	100			40				
HY-D2 7000/0.8	7000	0.8	4	110				40			

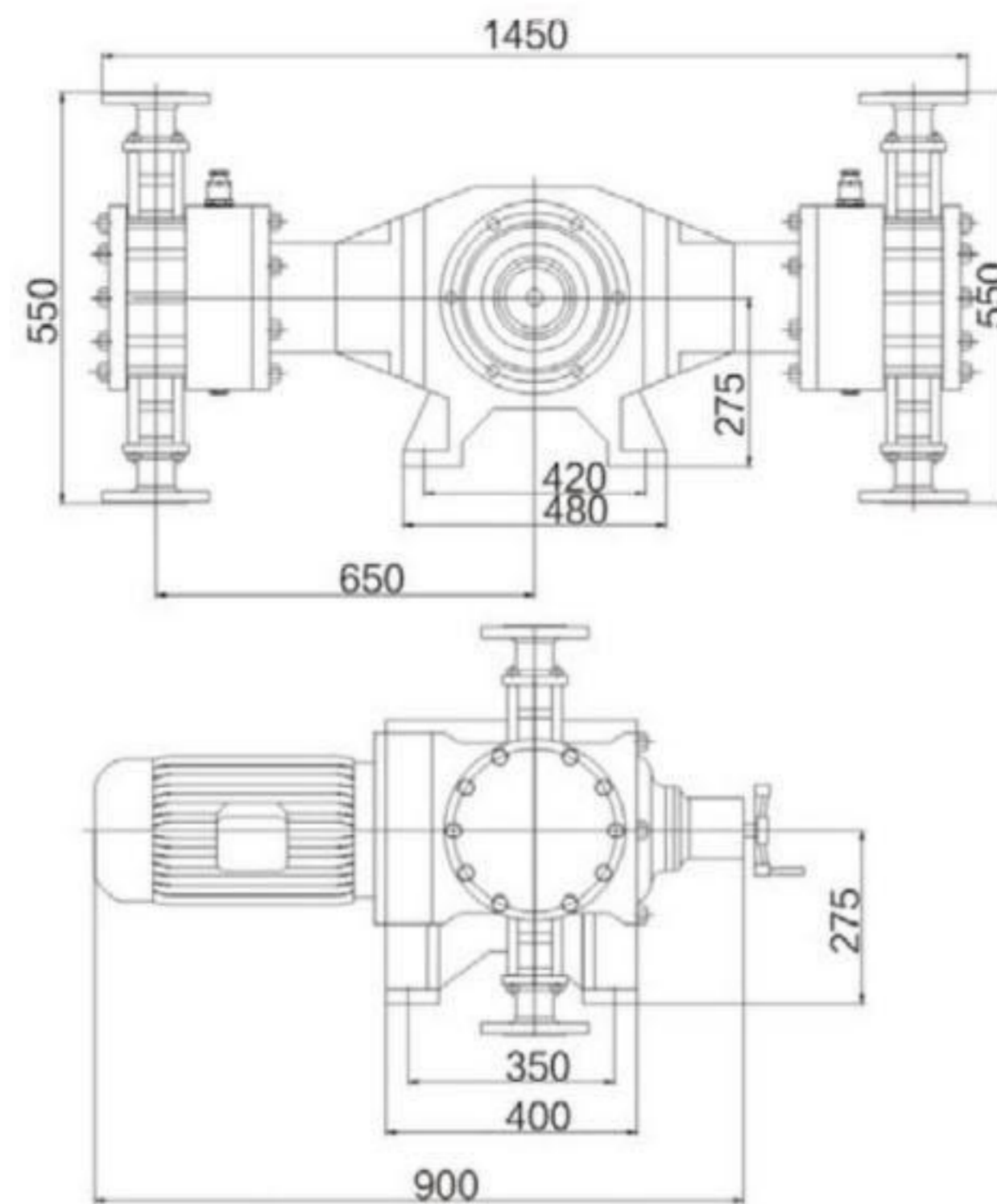
HY-T Hydraulic Metering Pump



• Performance Parameters

MODEL	Max Flow rate (L/H)	Max Pressure (Mpa)	Stroke length (mm)	Stroke Rate (SPM)	Motor Powers (W)	Plunger diameter (mm)	Connections (mm)	Weight (KG)
HY-T 185/50	185	50	60	127	11	25	15	550
HY-T 300/35	300	35				30		
HY-T 400/25	400	25				35	20	
HY-T 540/20	540	20				40		
HY-T 680/15	680	15				45	25	
HY-T 850/12	850	12				50		
HY-T 1000/10	1000	10				55		
HY-T 1250/8.5	1250	8.5				60	40	
HY-T 1450/8	1450	8				65		
HY-T 1700/6.3	1700	6.3				70		
HY-T 1950/5.5	1950	5.5				75	50	
HY-T 2250/5	2250	5				80		
HY-T 2550/4.3	2550	4.3				85		
HY-T 2850/3.8	2850	3.8				90	65	
HY-T 3200/3.5	3200	3.5				95		
HY-T 3500/3.1	3500	3.1				100		
HY-T 3800/2.8	3800	2.8				105	80	
HY-T 4200/2.6	4200	2.6				110		
HY-T 5000/2.2	5000	2.2				120		
HY-T 5800/1.8	5800	1.8				130	80	
HY-T 6800/1.6	6800	1.6	140					
HY-T 7850/1.4	7850	1.4	150					
HY-T 9000/1.2	9000	1.2	160	80				
HY-T 10000/1.0	10000	1.0	170					
HY-T 11500/0.8	11500	0.8	180					

HY-T2 Hydraulic Metering Pump



• Performance Parameters

MODEL	Max Flow rate (L/H)	Max Pressure (Mpa)	Stroke length (mm)	Stroke Rate (SPM)	Motor Powers (W)	Plunger diameter (mm)	Connections (mm)	Weight (KG)
HY-T2 240/50	240	50	60	127	11	20	15	650
HY-T2 370/40	370	40				25		
HY-T2 600/35	600	35				30		
HY-T2 800/25	800	25				35		
HY-T2 1080/20	1080	20				40		
HY-T2 1360/15	1360	15				45		
HY-T2 1700/12	1700	12				50		
HY-T2 2000/10	2000	10				55		
HY-T2 2500/8.5	2500	8.5				60		
HY-T2 2900/8	2900	8				65		
HY-T2 3100/6.3	3100	6.3				70		
HY-T2 3900/5.5	3900	5.5				75		
HY-T2 4500/5	4500	5				80		
HY-T2 5100/4.3	5100	4.3				85		
HY-T2 5700/3.8	5700	3.8				90		
HY-T2 6400/3.5	6400	3.5				95		
HY-T2 7000/3.1	7000	3.1				100		
HY-T2 7600/2.8	7600	2.8				105		
HY-T2 8400/2.6	8400	2.6				110		
HY-T2 9200/2.5	9200	2.5				115		
HY-T2 10000/2.2	10000	2.2	120					
HY-T2 11000/2	11000	2	125					
HY-T2 11600/1.8	11600	1.8	130					
HY-T2 12800/1.7	12800	1.7	135					
HY-T2 13600/1.6	13600	1.6	140					
HY-T2 14800/1.5	14800	1.5	145					
HY-T2 15700/1.4	15700	1.4	150					
HY-T2 18000/1.2	18000	1.2	160					
HY-T2 20000/1.0	20000	1.0	170					
HY-T2 23000/0.8	23000	0.8	180					

Double Diaphragm Rupture Alarm



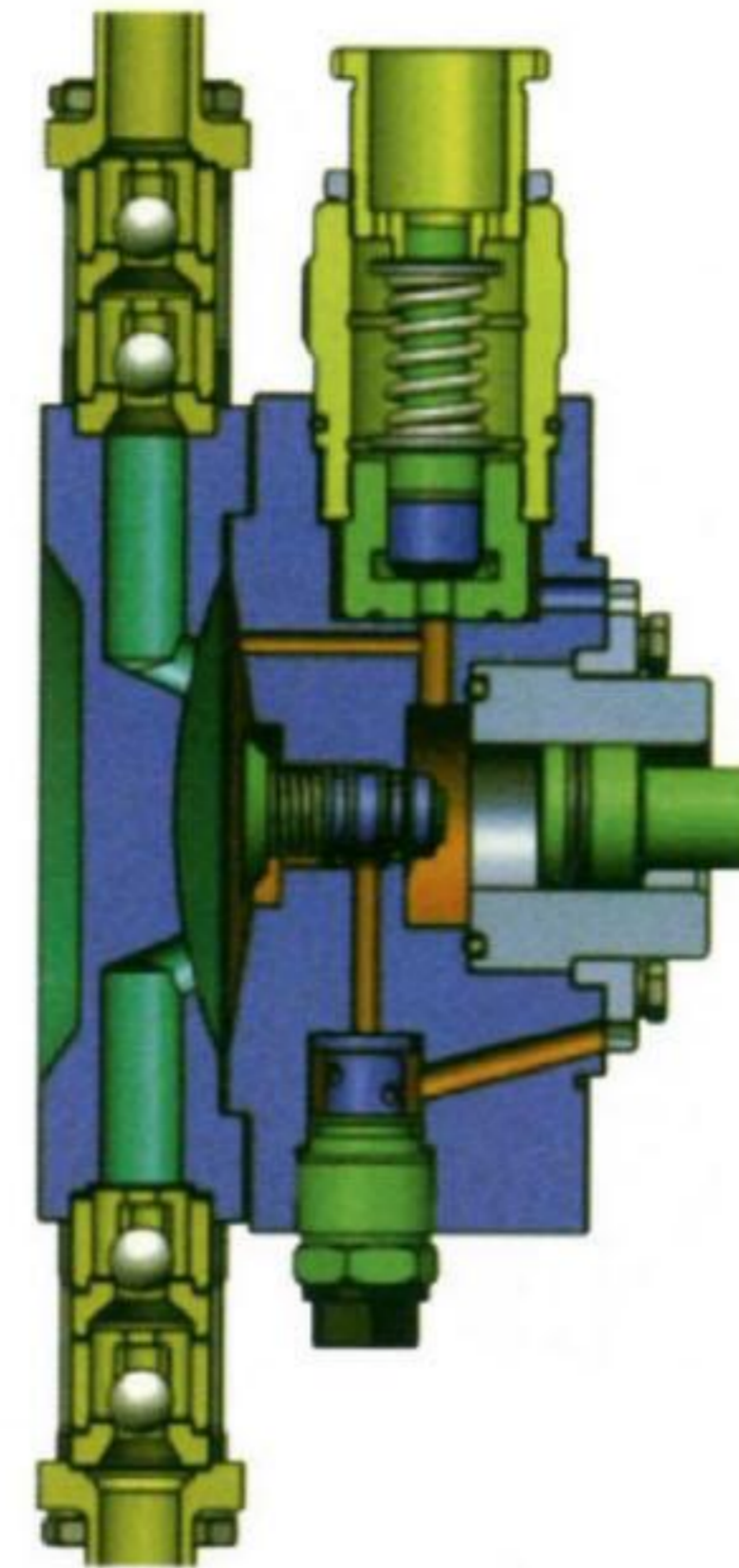
Double Diaphragm Rupture Alarm

■ Product features:

- Moving-free sealing design, leak-free and convenient maintenance.
- The maximum working pressure can be up to 30 MPa, and the measurement accuracy is (+1%).
- The metering accuracy is better than that of mechanical diaphragm pump, and the sealability is better than that of plunger pump.
- Flow control is implemented by adjusting stroke length or adjusting speed with frequency converter, which may also implemented by remote automatic control.
- Medium temperature should not be higher than 100 °C and lower than - 20°C, otherwise it will affect the service life of the diaphragm.
- With the utilization of advanced overload, limit and oil-replenishing three-valve mechanism, it can not only ensure sufficient hydraulic oil in the hydraulic chamber, but also avoid excessive oil replenishment and prevent hydraulic impact, so as to balance the forces on both sides of the diaphragm, improve the service life of the diaphragm, and increase the service life of the diaphragm to more than 8000 hours.
- When transporting special medium, double-diaphragm with diaphragm rupture alarm system can be chosen to prevent the accident caused by the mixture of medium and hydraulic oil when diaphragm rupture occurs.
- Digital controller is available for the metering pump with power below 0.75KW(including 0.75KW) to realize digitalized local and remote control. It is suitable for ordinary normal temperature water and other liquids even with strong corrosion, volatile, easy crystallization, flammable, explosive, highly toxic, corrosive, radioactive or valuable characteristics. It can also transport suspensions. In order to prevent accidents caused by the mixture of medium and hydraulic oil in case of diaphragm rupture, metering pump with double-diaphragm and diaphragm rupture alarm system can be chosen for the transportation of inflammable, explosive, highly toxic and valuable liquids.

■ Product features:

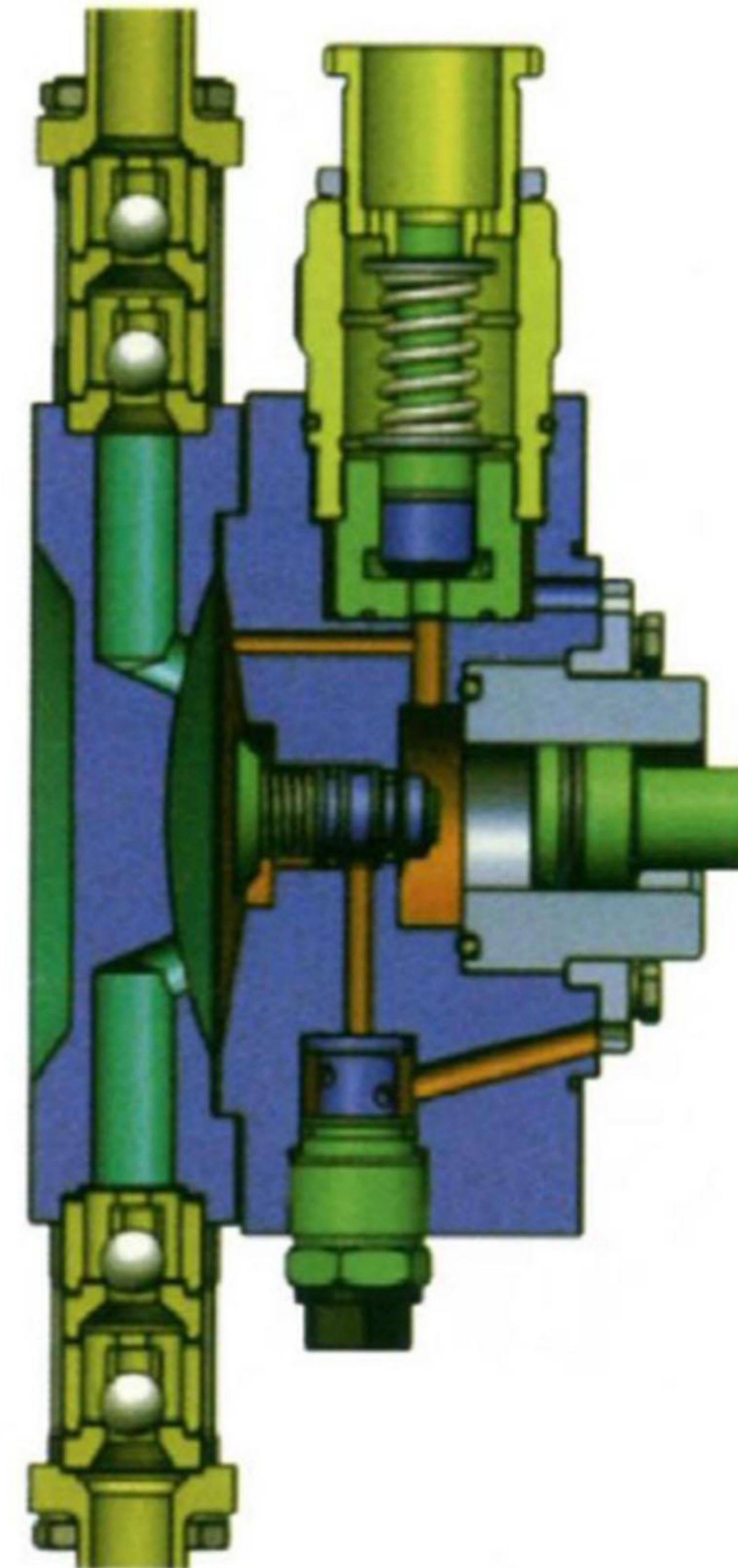
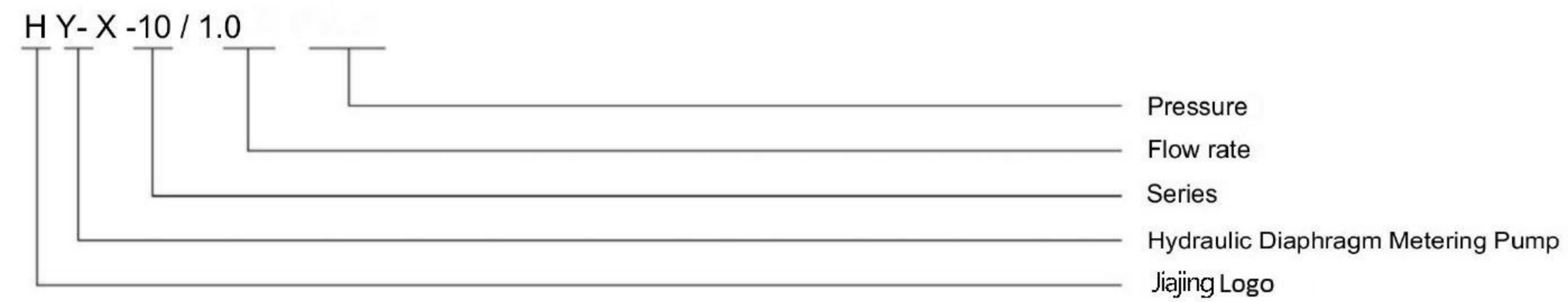
- Advanced hydraulic system design, safe and leak-free.
- The maximum working pressure can be up to 30 MPa, and the measurement accuracy is (+1%).
- The flow rate of the pump can be adjusted both in running and stop states.
- Medium temperature should not be higher than 100 °C and lower than - 30°C, otherwise it will affect the service life of the diaphragm.
- It can quantitatively transport acid, alkali, water and various special media.
- It can also operate safely without medium in the pump head.
- Noise-free, small size, simple operation and convenient maintenance.



■ Main application

This equipment is suitable for ordinary normal temperature water and other liquids even with strong corrosion, volatile, easy crystallization, flammable, explosive, highly toxic, corrosive, radioactive or valuable characteristics. It can also transport suspensions. In order to prevent accidents caused by the mixture of medium and hydraulic oil in case of diaphragm rupture, metering pump with double-diaphragm and diaphragm rupture alarm system can be chosen for the transportation of inflammable, explosive, highly toxic and valuable liquids.

■ Model Example



HYDRAULIC DIAPHRAGM METERING PUMP

Quality, Expertise, Innovation, Reliability.

Agriculture, Chemicals, Oil & Gas, Industry, Water



■ Stroke controller of the metering pump

The stroke controller changes the position of the stroke adjusting screw according to the received input control signal. It changes the length of each stroke of the metering pump from the surface and finally adjusts the output flow of the pump, so as to achieve the purpose of automatic control.

■ Major advantages

- 0-100% adjustment range.
- The percentage of adjustment is shown by digital display.
- Low cost for operation and maintenance.
- Electric and manual mode conversion.
- Remote regulation and automatic control.
- Automatic position feedback after adjustment.
- After the automatic control system is powered on, it will automatically return to zero to 4-20 mA mode.

■ Technical reference

- Service condition: ambient temperature 0-50 °C.
- Supply voltage(for standard option): 220V ± 10%, Single phase, 50Hz.
- Adjustment speed: 20 rps(Revolutions Per Second).
- Power consumption: 25VA
- Protection grade: 1P65
- Relative humidity: 90% (25 °C)
- Input control signal (for standard option): 4-20mA (input impedance: 120Q)
- Output feed signal (for standard option): 4-20 mA (input impedance of stroke controller of metering pump: 100-1500Q)
- EMC requirements for signal wires: complies with EN50081-1 and EN50082-2.



Metering Pump Stroke Controller



Ptfe Composite Diaphragm

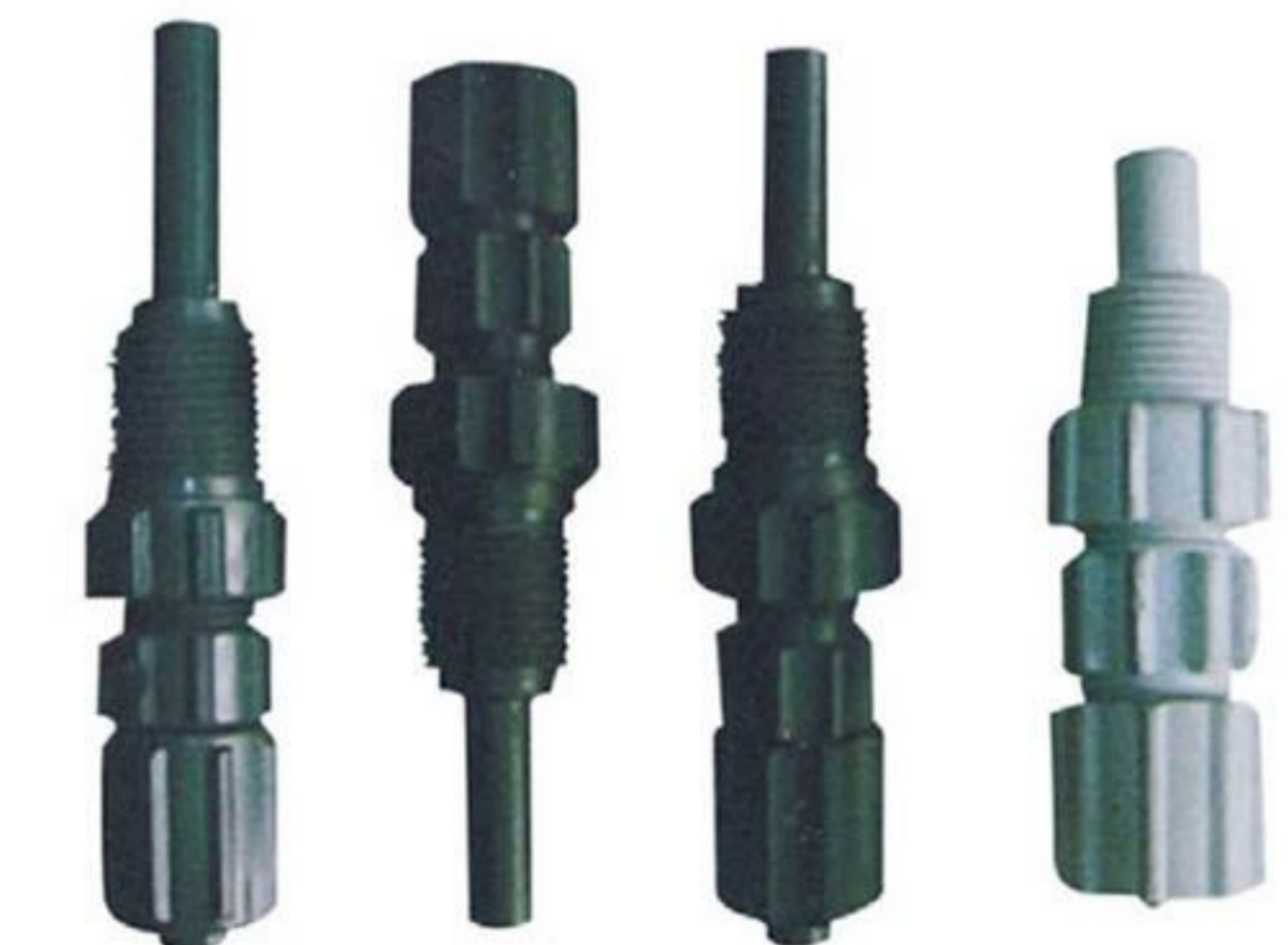


Dosing Agitator



Injection Valve

The dosing valve is a fitting which you use for the initiating of dosing fluid in the process system. They prevent that the liquid penetrates from the system ready for treatment into the dosing line.



Non-returning Valve

check valves are equipped with a spring-loaded ball valve. Because of that, it prevents that the medium flows back.

Material: PVC, PTFE, SS304, Ss316



Filter Foot Valve

Foot valves prevent the back flow of the medium once induction has taken place and support a problem-free functioning of the metering pump.

Material: PVC PTFE 304 316



Y Type Filter

Y Type Filter is used to clear impurity or large granules away from carried mediums, in order to ensure the normal operation of metering pump. It is installed on the inlet pipeline of metering pump.

Material: PVC,SS304,SS316,PP,Carbon Steel

Connection

size:DN15,DN20,DN25,DN32,DN40,DN50,DN65,DN80, Dn100

Connection type: Glue union,Flange,Socket



Safety Relief Valve

Material: PVC; PTFE; SS304; SS316

Connection type: Female thread ,Flange

Feature:

safety relief valve help to relieve excess pressure on the pump system or maintain pressure at a setted point .Safety relief valve is installed on the outlet pipeline of metering pump. When the system pressure becomes abnormal, safety relief valve protects metering pump from any damages.



Pulsation Damper

materal:PVC; SS304; SS316L

connection size: DN 15 DN20 DN25 DN32 DN40

Connection type: Female thread ,Flange,Socket

Feature:

Pulsation dampers are liquid pressure vessels that is to slow down the impulse hunting of liquid medicine discharged from metering pump.

The pulsation caused by the metering pump can be effectively reduced up to 95% with the suitable damper size installed in the pumping system.



Back pressure valve

Material: PVC; PTFE; SS304; SS316

Connection type: Female thread ,Flange

Feature:

Back pressure valve shall be installed at the outlet of metering pump in order to reduce siphon and excess feeding, and ensure the metering accuracy of metering pump is not affected, when dosing point is lower than the outlet of metering pump.



Overview

JSLG-A digital controller is a complete set of control system matched with metering pump. It is a universal and intelligent controller developed and produced by the company. The controller is widely used in medicine, chemical industry, atomic energy, petroleum, electric power, environmental protection, food, paper and other important industrial fields, it is particularly popular especially in the process flow which needs accurate measurement, quantitative filling, continuous or intermittent equipments to transmit various strongly corrosive liquid media. The controller has the advantages of high display precision, complete function, stable performance and reliable operation, superior cost performance, simple structure and convenient operation.

Functional characteristics

- The equipment has a large LCD panel with abundant operation functions, including remote, manual, automatic, periodic and quantitative control. The LCD screen can display the current flow, cumulative flow, 485 communication address, working mode, output frequency of the frequency converter and other information in real time.
- Single cumulative flow display function.
- It also has total cumulative flow saving and display function, password protection function. Only administrators with authority can clear the total cumulative flow.
- It has the function of digital frequency conversion control for speed regulation, which can compose dual flow regulation with flow regulating handle.This makes flow regulation more precise and flexible. It can also use a 4-20mA analog signal to adjust flow remotely online and realize automatic control.
- It can run automatically according to the scheduled time periodically.
- The built-in sensor of the metering pump can realize precise quantitative control.
- By receiving the lower contact signal of the liquid level gauge of the liquid storage tank, automatic control function of the liquid level can be achieved, such as stopping the pump when the liquid level of the outlet tank is high, or stopping the pump automatically when the liquid level of the inlet tank is low, which can effectively protect the metering pump.
- It has a remote start/stop control end, which can receive the dry contact signal from the host computer, thus remote start/stop process.
- With 485 communication interface and computer software, centralized control can be realized.
- System fault alarm display and alarm output functions.

